

MLST8 Antibody

Catalog No: #32136

Package Size: #32136-1 50ul #32136-2 100ul

Orders: order@signalwayantibody.com

Support: tech@signalwayantibody.com

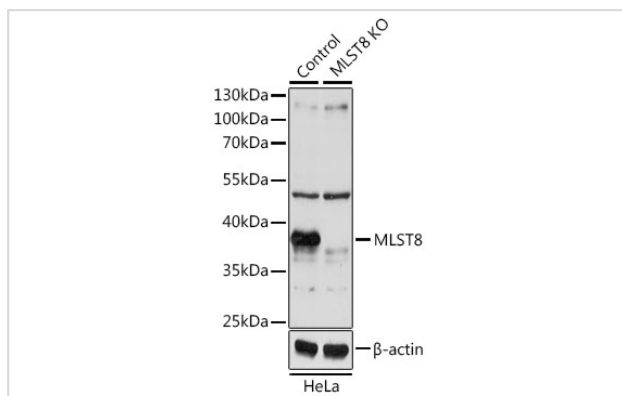
Description

Product Name	MLST8 Antibody
Host Species	Rabbit
Clonality	Polyclonal
Purification	Antibodies were purified by affinity purification using immunogen.
Applications	WB
Species Reactivity	Human,Mouse,Rat
Specificity	The antibody detects endogenous level of total MLST8 protein.
Immunogen Type	Recombinant Protein
Immunogen Description	Recombinant protein of human MLST8.
Target Name	MLST8
Other Names	GBL; LST8; MGC111011; POP3; WAT1
Accession No.	Swiss-Prot:Q9BVC4NCBI Gene ID:64223
Uniprot	Q9BVC4
GeneID	64223;
SDS-PAGE MW	36KD
Concentration	1.0mg/ml
Formulation	Supplied at 1.0mg/mL in phosphate buffered saline (without Mg ²⁺ and Ca ²⁺), pH 7.4, 150mM NaCl, 0.02% sodium azide and 50% glycerol.
Storage	Store at -20°C

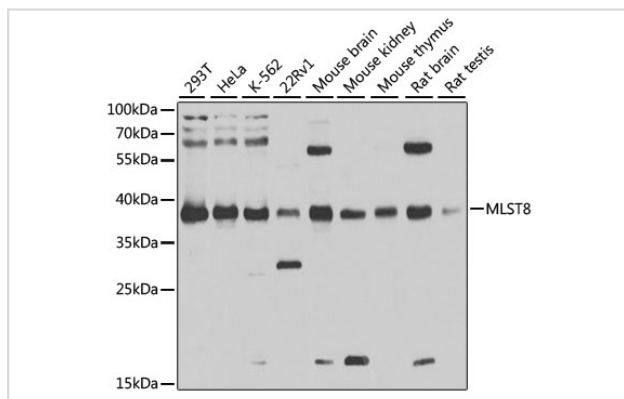
Application Details

WB 1:500 - 1:2000

Images



Western blot analysis of extracts from normal (control) and MLST8 knockout (KO) HeLa cells, using MLST8 at 1:1000 dilution.



Western blot analysis of extracts of various cell lines, using MLST8 at 1:1000 dilution.

Background

Cell growth is a fundamental biological process whereby cells accumulate mass and increase in size. The mammalian Target of Rapamycin (mTOR) pathway regulates growth by coordinating energy and nutrient signals with growth factor-derived signals (1). mTOR is a large protein kinase with two different complexes. One complex contains mTOR, GβL, and raptor, which is a target of rapamycin. The other complex, insensitive to rapamycin, includes mTOR, GβL, and rictor (1). GβL associates with the kinase domain of mTOR and stimulates mTOR kinase activity (2). A reduction in GβL expression has been shown to decrease in vivo phosphorylation of S6K1 (2).

Note: This product is for in vitro research use only