

## RHOC Antibody

Catalog No: #32138

Package Size: #32138-1 50ul #32138-2 100ul

Orders: [order@signalwayantibody.com](mailto:order@signalwayantibody.com)Support: [tech@signalwayantibody.com](mailto:tech@signalwayantibody.com)

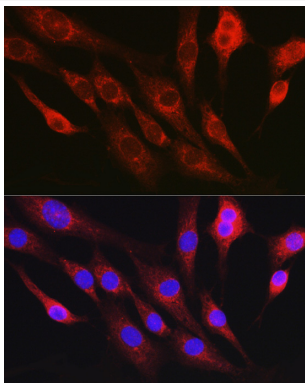
## Description

Product Name	RHOC Antibody
Host Species	Rabbit
Clonality	Polyclonal
Isotype	IgG
Purification	Affinity purification
Applications	WB,IHC,IF
Species Reactivity	Human,Mouse,Rat
Specificity	The antibody detects endogenous level of total RHOC protein.
Immunogen Type	Recombinant Protein
Immunogen Description	Recombinant fusion protein of human RhoC (NP_001036144.1).
Target Name	RHOC
Other Names	RHOC;ARH9;ARHC;H9;RHOH9
Accession No.	Uniprot:P08134GeneID:389
Uniprot	P08134
GeneID	389
SDS-PAGE MW	22KDa
Concentration	1.0mg/ml
Formulation	PBS with 0.02% sodium azide,50% glycerol,pH7.3.
Storage	Store at -20°C. Avoid freeze / thaw cycles.

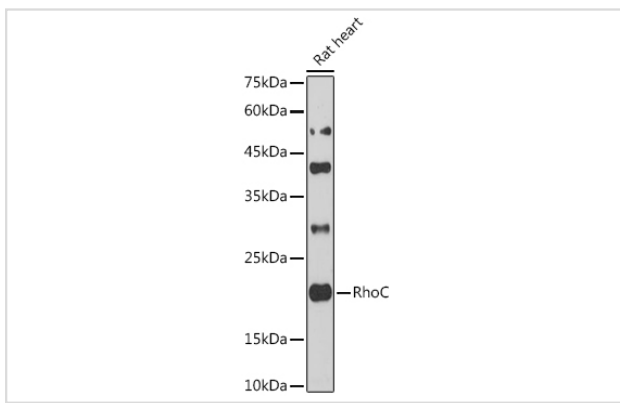
## Application Details

WB □ 1:500 - 1:2000 IHC □ 1:50 - 1:100 IF □ 1:50 - 1:100

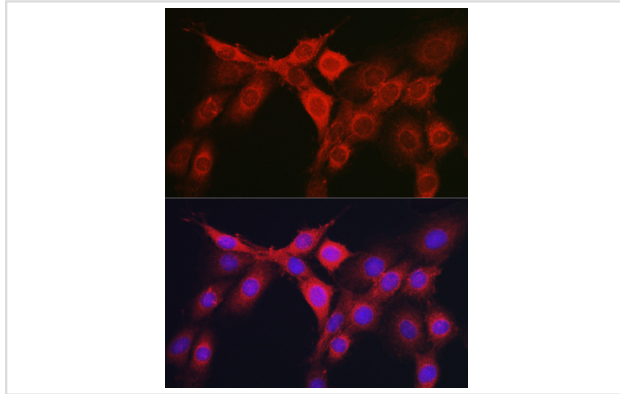
## Images



Immunofluorescence analysis of NIH/3T3 cells using [KO Validated] RhoC Rabbit pAb.



Western blot analysis of extracts of Rat heart cells, using RhoC antibody.



Immunofluorescence analysis of PC-12 cells using [KO Validated] RhoC Rabbit pAb.

## Background

This gene encodes a member of the Rho family of small GTPases, which cycle between inactive GDP-bound and active GTP-bound states and function as molecular switches in signal transduction cascades. Rho proteins promote reorganization of the actin cytoskeleton and regulate cell shape, attachment, and motility. The protein encoded by this gene is prenylated at its C-terminus, and localizes to the cytoplasm and plasma membrane. It is thought to be important in cell locomotion. Overexpression of this gene is associated with tumor cell proliferation and metastasis. Multiple alternatively spliced variants, encoding the same protein, have been identified.

Note: This product is for in vitro research use only