

## ATP2A2 Antibody

Catalog No: #32157

Package Size: #32157-1 50ul #32157-2 100ul

Orders: [order@signalwayantibody.com](mailto:order@signalwayantibody.com)Support: [tech@signalwayantibody.com](mailto:tech@signalwayantibody.com)

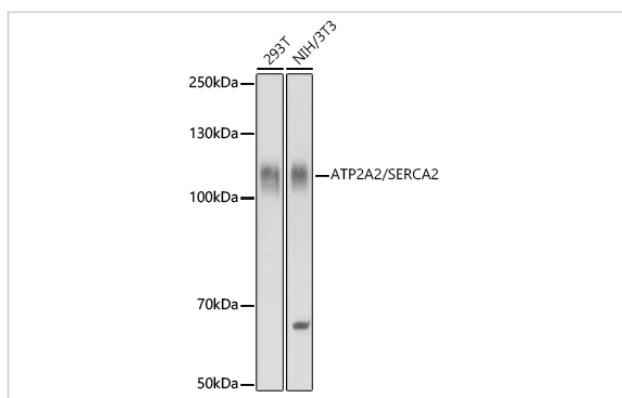
## Description

Product Name	ATP2A2 Antibody
Host Species	Rabbit
Clonality	Polyclonal
Isotype	IgG
Purification	Affinity purification
Applications	WB,IHC,IF
Species Reactivity	Human,Mouse,Rat
Specificity	The antibody detects endogenous level of total ATP2A2 protein.
Immunogen Type	Recombinant Protein
Immunogen Description	Recombinant fusion protein of human SERCA2/ATP2A2 (NP_733765.1).
Target Name	ATP2A2
Other Names	ATP2B;DAR;DD;SERCA2;ATP2A2/SERCA2;ATP2A2
Accession No.	Uniprot:P16615GeneID:488
Uniprot	P16615
GeneID	488
SDS-PAGE MW	115KDa
Concentration	1.0mg/ml
Formulation	PBS with 0.02% sodium azide,50% glycerol,pH7.3.
Storage	Store at -20°C. Avoid freeze / thaw cycles.

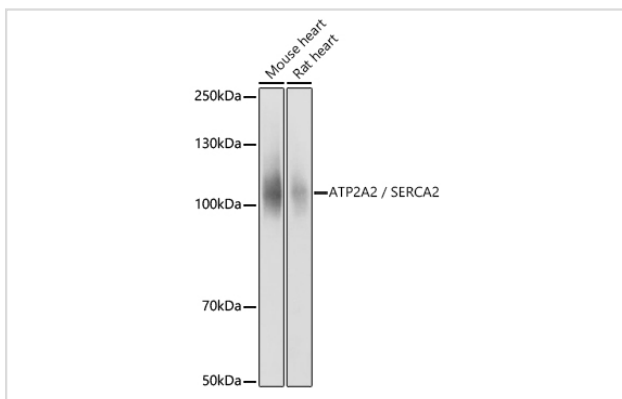
## Application Details

WB □ 1:500 - 1:2000 IHC □ 1:50 - 1:200 IF □ 1:10 - 1:100

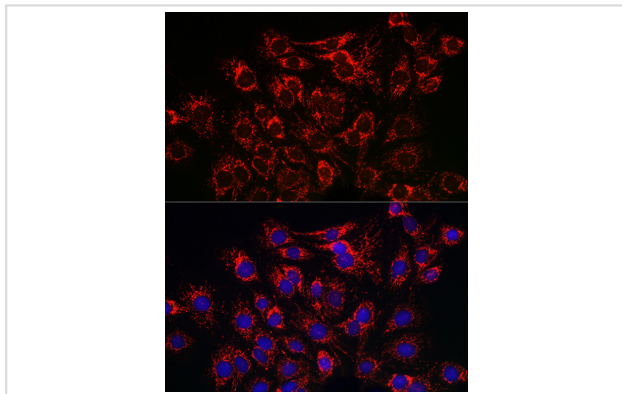
## Images



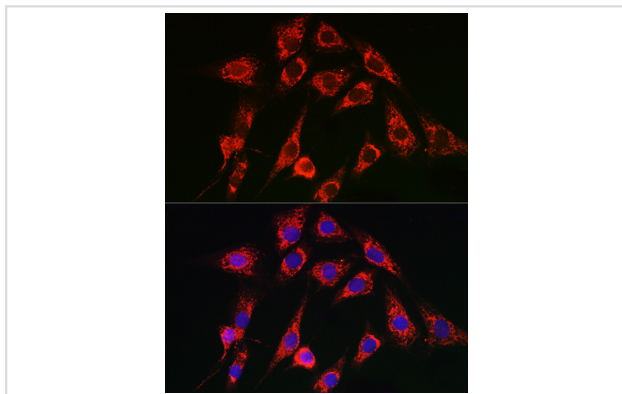
Western blot analysis of extracts of various cell lines, using ATP2A2 / SERCA2 antibody.



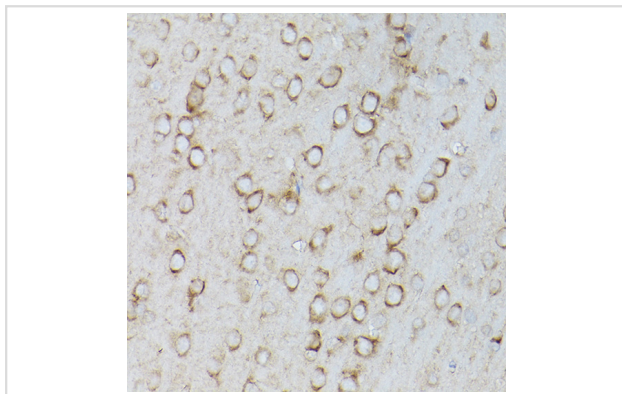
Western blot analysis of extracts of various cell lines, using ATP2A2 / SERCA2 antibody.



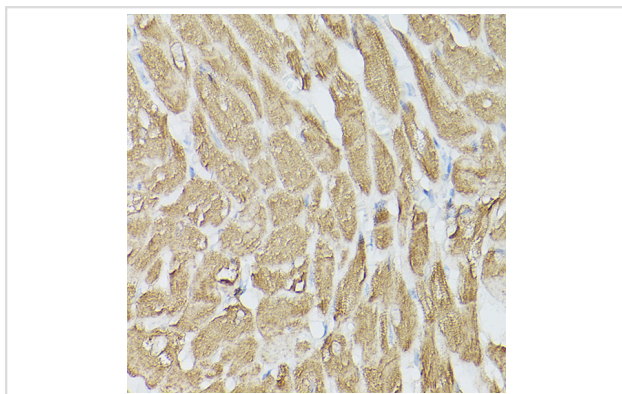
Immunofluorescence analysis of C6 cells using SERCA2/ATP2A2 Rabbit pAb.



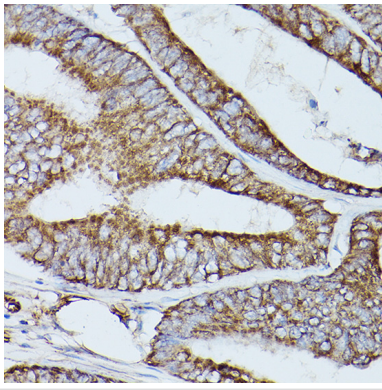
Immunofluorescence analysis of NIH-3T3 cells using SERCA2/ATP2A2 Rabbit pAb.



Immunohistochemistry of paraffin-embedded mouse brain using SERCA2/ATP2A2 Rabbit pAb.



Immunohistochemistry of paraffin-embedded rat heart using SERCA2/ATP2A2 Rabbit pAb.



Immunohistochemistry of paraffin-embedded human colon carcinoma using SERCA2/ATP2A2 Rabbit pAb.

## Background

This gene encodes one of the SERCA Ca<sup>2+</sup>-ATPases, which are intracellular pumps located in the sarcoplasmic or endoplasmic reticula of muscle cells. This enzyme catalyzes the hydrolysis of ATP coupled with the translocation of calcium from the cytosol into the sarcoplasmic reticulum lumen, and is involved in regulation of the contraction/relaxation cycle. Mutations in this gene cause Darier-White disease, also known as keratosis follicularis, an autosomal dominant skin disorder characterized by loss of adhesion between epidermal cells and abnormal keratinization. Alternative splicing results in multiple transcript variants encoding different isoforms.

Note: This product is for in vitro research use only