

BAG1 Antibody

Catalog No: #32161

Package Size: #32161-1 50ul #32161-2 100ul

Orders: order@signalwayantibody.comSupport: tech@signalwayantibody.com

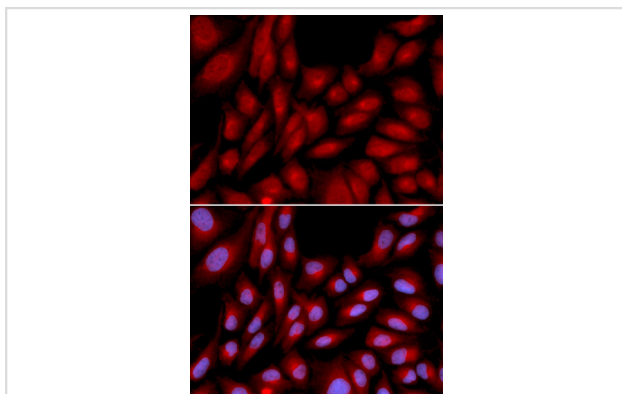
Description

Product Name	BAG1 Antibody
Host Species	Rabbit
Clonality	Polyclonal
Isotype	IgG
Purification	Affinity purification
Applications	WB,IF
Species Reactivity	Human,Mouse
Specificity	The antibody detects endogenous level of total BAG1 protein.
Immunogen Type	Recombinant Protein
Immunogen Description	Recombinant fusion protein of human BAG1 (NP_001165886.1).
Target Name	BAG1
Other Names	BAG1;BAG-1;HAP;RAP46
Accession No.	Uniprot:Q99933GeneID:573
Uniprot	Q99933
GeneID	573
SDS-PAGE MW	43kDa
Concentration	1.0mg/ml
Formulation	PBS with 0.02% sodium azide,50% glycerol,pH7.3.
Storage	Store at -20°C. Avoid freeze / thaw cycles.

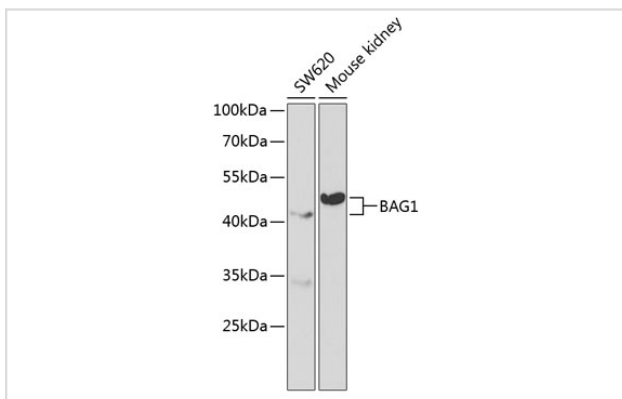
Application Details

WB □ 1:500 - 1:2000 IF □ 1:20 - 1:100

Images



Immunofluorescence analysis of U2OS cells using BAG1 antibody.



Western blot analysis of extracts of various cell lines, using BAG1 antibody.

Background

The oncogene BCL2 is a membrane protein that blocks a step in a pathway leading to apoptosis or programmed cell death. The protein encoded by this gene binds to BCL2 and is referred to as BCL2-associated athanogene. It enhances the anti-apoptotic effects of BCL2 and represents a link between growth factor receptors and anti-apoptotic mechanisms. Multiple protein isoforms are encoded by this mRNA through the use of a non-AUG (CUG) initiation codon, and three alternative downstream AUG initiation codons. A related pseudogene has been defined on chromosome X.

Note: This product is for in vitro research use only