

BCL10 Antibody

Catalog No: #32162

Package Size: #32162-1 50ul #32162-2 100ul

Orders: order@signalwayantibody.comSupport: tech@signalwayantibody.com

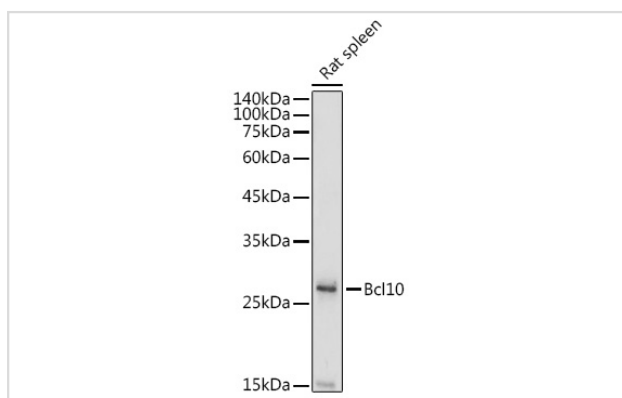
Description

Product Name	BCL10 Antibody
Host Species	Rabbit
Clonality	Polyclonal
Isotype	IgG
Purification	Affinity purification
Applications	WB
Species Reactivity	Human,Mouse,Rat
Specificity	The antibody detects endogenous level of total BCL10 protein.
Immunogen Type	Recombinant Protein
Immunogen Description	Recombinant fusion protein of human Bcl10 (NP_003912.1).
Target Name	BCL10
Other Names	BCL10;CARMEN;CIPER;CLAP;IMD37;c-E10;mE10
Accession No.	Uniprot:O95999GeneID:8915
Uniprot	O95999
GeneID	8915
SDS-PAGE MW	30KDa
Concentration	1.0mg/ml
Formulation	PBS with 0.02% sodium azide,50% glycerol,pH7.3.
Storage	Store at -20°C. Avoid freeze / thaw cycles.

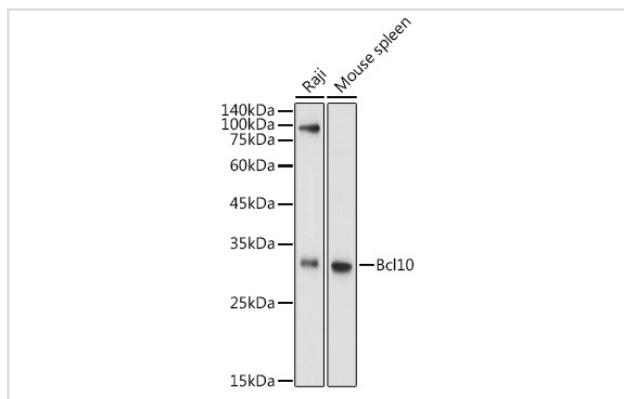
Application Details

WB □ 1:500 - 1:2000

Images



Western blot analysis of extracts of Rat spleen, using Bcl10 antibody.



Western blot analysis of extracts of various cell lines, using Bcl10 antibody.

Background

This gene was identified by its translocation in a case of mucosa-associated lymphoid tissue (MALT) lymphoma. The protein encoded by this gene contains a caspase recruitment domain (CARD), and has been shown to induce apoptosis and to activate NF-kappaB. This protein is reported to interact with other CARD domain containing proteins including CARD9, 10, 11 and 14, which are thought to function as upstream regulators in NF-kappaB signaling. This protein is found to form a complex with MALT1, a protein encoded by another gene known to be translocated in MALT lymphoma. MALT1 and this protein are thought to synergize in the activation of NF-kappaB, and the deregulation of either of them may contribute to the same pathogenetic process that leads to the malignancy. Alternative splicing results in multiple transcript variants.

Note: This product is for in vitro research use only