

ARHGEF7 Antibody

Catalog No: #32163

Package Size: #32163-1 50ul #32163-2 100ul

Orders: order@signalwayantibody.com

Support: tech@signalwayantibody.com

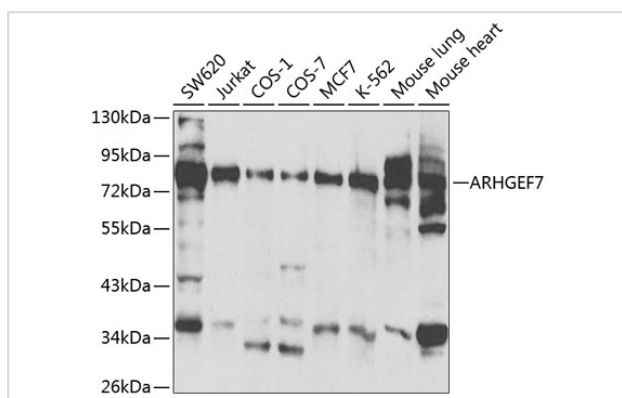
Description

Product Name	ARHGEF7 Antibody
Host Species	Rabbit
Clonality	Polyclonal
Isotype	IgG
Purification	Affinity purification
Applications	WB,IF
Species Reactivity	Human,Mouse
Specificity	The antibody detects endogenous level of total ARHGEF7 protein.
Immunogen Type	Recombinant Protein
Immunogen Description	Recombinant fusion protein of human ARHGEF7 (NP_001106984.1).
Target Name	ARHGEF7
Other Names	ARHGEF7;BETA-PIX;COOL-1;COOL1;Nbla10314;P50;P50BP;P85;P85COOL1;P85SPR;PAK3;PIXB
Accession No.	Uniprot:Q14155GeneID:8874
Uniprot	Q14155
GeneID	8874
SDS-PAGE MW	86kDa
Concentration	1.0mg/ml
Formulation	PBS with 0.02% sodium azide,50% glycerol,pH7.3.
Storage	Store at -20°C. Avoid freeze / thaw cycles.

Application Details

WB □ 1:500 - 1:2000 IF □ 1:50 - 1:100

Images



Western blot analysis of extracts of various cell lines, using ARHGEF7 antibody.

Background

This gene encodes a protein that belongs to a family of cytoplasmic proteins that activate the Ras-like family of Rho proteins by exchanging bound GDP for GTP. It forms a complex with the small GTP binding protein Rac1 and recruits Rac1 to membrane ruffles and to focal adhesions. Multiple alternatively spliced transcript variants encoding different isoforms have been observed for this gene.

Note: This product is for in vitro research use only