

APEX1 Antibody

Catalog No: #32167

Package Size: #32167-1 50ul #32167-2 100ul

Orders: order@signalwayantibody.comSupport: tech@signalwayantibody.com

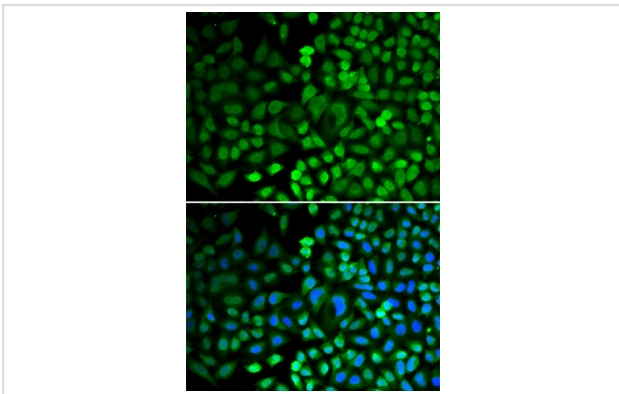
Description

Product Name	APEX1 Antibody
Host Species	Rabbit
Clonality	Polyclonal
Isotype	IgG
Purification	Affinity purification
Applications	WB,IF
Species Reactivity	Human
Specificity	The antibody detects endogenous level of total APEX1 protein.
Immunogen Type	Recombinant Protein
Immunogen Description	Recombinant fusion protein of human APEX1/APE1 (NP_542380.1).
Target Name	APEX1
Other Names	APEX1;APE;APE1;APEN;APEX;APX;HAP1;REF1
Accession No.	Uniprot:P27695GenelD:328
Uniprot	P27695
GenelD	328
SDS-PAGE MW	39kDa
Concentration	1.0mg/ml
Formulation	PBS with 0.02% sodium azide,50% glycerol,pH7.3.
Storage	Store at -20°C. Avoid freeze / thaw cycles.

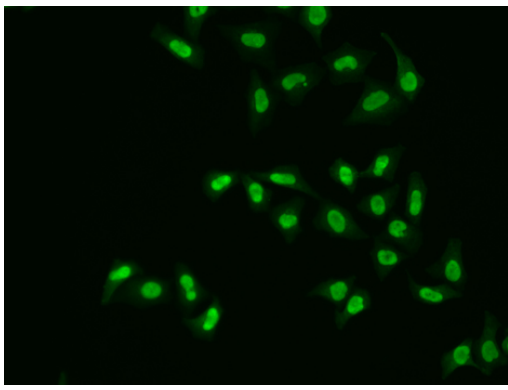
Application Details

WB \square 1:500 - 1:2000 IF \square 1:50 - 1:100

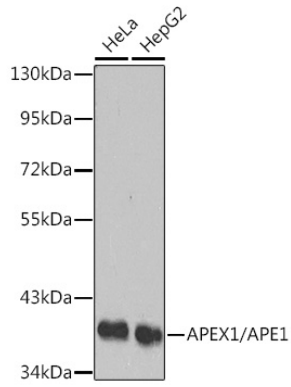
Images



Immunofluorescence analysis of HeLa cells using APEX1/APE1 antibody.



Immunofluorescence analysis of A549 cells using APEX1/APE1 antibody.



Western blot analysis of extracts of various cell lines, using APEX1/APE1 antibody.

Background

Apurinic/aprimidinic (AP) sites occur frequently in DNA molecules by spontaneous hydrolysis, by DNA damaging agents or by DNA glycosylases that remove specific abnormal bases. AP sites are pre-mutagenic lesions that can prevent normal DNA replication so the cell contains systems to identify and repair such sites. Class II AP endonucleases cleave the phosphodiester backbone 5' to the AP site. This gene encodes the major AP endonuclease in human cells. Splice variants have been found for this gene; all encode the same protein.

Note: This product is for in vitro research use only