

## E2F8 Antibody

Catalog No: #32173

Package Size: #32173-1 50ul #32173-2 100ul

Orders: order@signalwayantibody.com

Support: tech@signalwayantibody.com

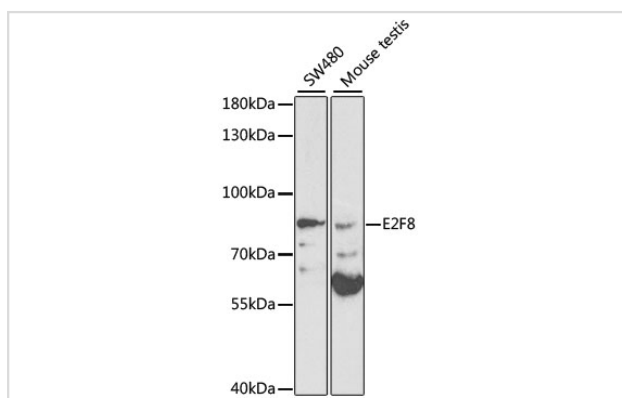
## Description

Product Name	E2F8 Antibody
Host Species	Rabbit
Clonality	Polyclonal
Purification	Antibodies were purified by affinity purification using immunogen.
Applications	WB
Species Reactivity	Human,Mouse,Rat
Specificity	The antibody detects endogenous level of total E2F8 protein.
Immunogen Type	Recombinant Protein
Immunogen Description	Recombinant protein of human E2F8.
Target Name	E2F8
Other Names	E2F8; FLJ23311;
Accession No.	Swiss-Prot:A0AVK6NCBI Gene ID:79733
Uniprot	A0AVK6
GeneID	79733;
SDS-PAGE MW	94KD
Concentration	1.0mg/ml
Formulation	Supplied at 1.0mg/mL in phosphate buffered saline (without Mg <sup>2+</sup> and Ca <sup>2+</sup> ), pH 7.4, 150mM NaCl, 0.02% sodium azide and 50% glycerol.
Storage	Store at -20°C

## Application Details

WB □ 1:500 - 1:2000

## Images



Western blot analysis of extracts of various cell lines, using E2F8 at 1:1000 dilution.

## Background

---

This gene encodes a member of a family of transcription factors which regulate the expression of genes required for progression through the cell cycle. The encoded protein regulates progression from G1 to S phase by ensuring the nucleus divides at the proper time. Multiple alternatively spliced variants, encoding the same protein, have been identified.

---

Note: This product is for in vitro research use only