

## TCF4 Antibody

Catalog No: #32177

Package Size: #32177-1 50ul #32177-2 100ul

Orders: [order@signalwayantibody.com](mailto:order@signalwayantibody.com)Support: [tech@signalwayantibody.com](mailto:tech@signalwayantibody.com)

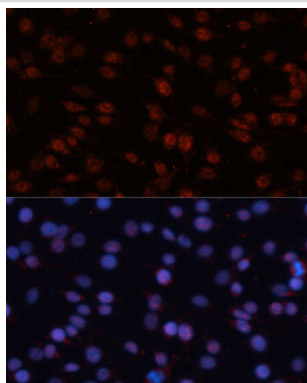
## Description

Product Name	TCF4 Antibody
Host Species	Rabbit
Clonality	Polyclonal
Purification	Antibodies were purified by affinity purification using immunogen.
Applications	WB,IF
Species Reactivity	Human,Mouse,Rat
Specificity	The antibody detects endogenous level of total TCF4 protein.
Immunogen Type	Recombinant Protein
Immunogen Description	Recombinant protein of human TCF4.
Target Name	TCF4
Other Names	E2-2; ITF2; PTHS; SEF2; ITF-2
Accession No.	Swiss-Prot:P15884NCBI Gene ID:6925
Uniprot	P15884
GeneID	6925;
SDS-PAGE MW	71KD
Concentration	1.0mg/ml
Formulation	Supplied at 1.0mg/mL in phosphate buffered saline (without Mg <sup>2+</sup> and Ca <sup>2+</sup> ), pH 7.4, 150mM NaCl, 0.02% sodium azide and 50% glycerol.
Storage	Store at -20°C

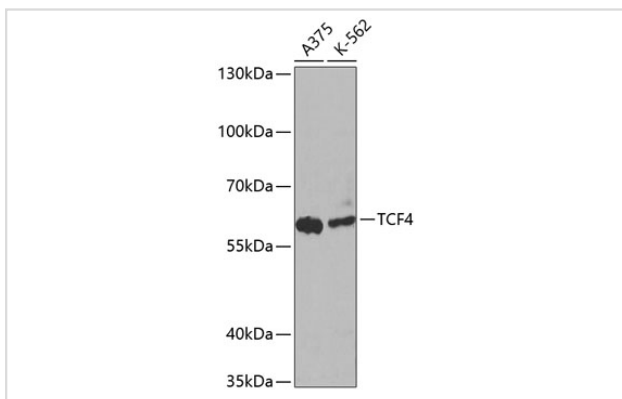
## Application Details

WB □ 1:500 - 1:2000IF □ 1:50 - 1:200

## Images



Immunofluorescence analysis of C6 cells using TCF4 Polyclonal at dilution of 1:100 (40x lens). Blue: DAPI for nuclear staining.



Western blot analysis of extracts of various cell lines, using TCF4 at 1:1000 dilution.

## Background

LEF1 and TCF are members of the high mobility group (HMG) DNA binding protein family of transcription factors that consists of the following: Lymphoid Enhancer Factor 1 (LEF1), T Cell Factor 1 (TCF1), TCF3, and TCF4 (1). LEF1 and TCF1 were originally identified as important factors regulating early lymphoid development (2) and act downstream in Wnt signaling. LEF1 and TCF bind to Wnt response elements to provide docking sites for  $\beta$ -catenin, which translocates to the nucleus to promote the transcription of target genes upon activation of Wnt signaling (3). LEF1 and TCF are dynamically expressed during development and aberrant activation of the Wnt signaling pathway is involved in many types of cancers including colon cancer (4,5).

Note: This product is for in vitro research use only