

## ALDOA Antibody

Catalog No: #32178

Package Size: #32178-1 50ul #32178-2 100ul

Orders: order@signalwayantibody.com

Support: tech@signalwayantibody.com

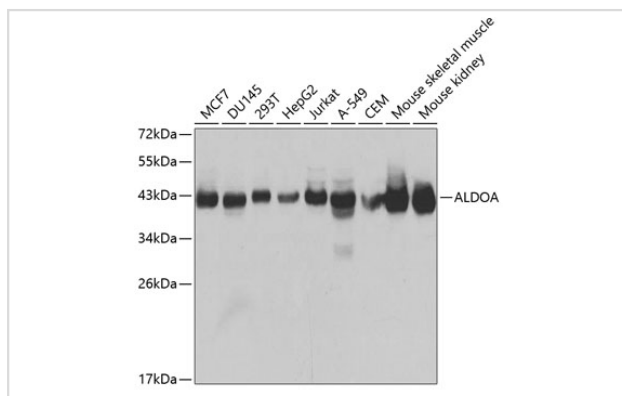
## Description

Product Name	ALDOA Antibody
Host Species	Rabbit
Clonality	Polyclonal
Purification	Antibodies were purified by affinity purification using immunogen.
Applications	WB,IF
Species Reactivity	Human,Mouse,Rat
Specificity	The antibody detects endogenous level of total ALDOA protein.
Immunogen Type	Recombinant Protein
Immunogen Description	Recombinant protein of human ALDOA.
Target Name	ALDOA
Other Names	ALDOA; ALDA; MGC10942; MGC17716; MGC17767
Accession No.	Swiss-Prot:P04075NCBI Gene ID:226
Uniprot	P04075
GeneID	226;
SDS-PAGE MW	39KD
Concentration	1.0mg/ml
Formulation	Supplied at 1.0mg/mL in phosphate buffered saline (without Mg <sup>2+</sup> and Ca <sup>2+</sup> ), pH 7.4, 150mM NaCl, 0.02% sodium azide and 50% glycerol.
Storage	Store at -20°C

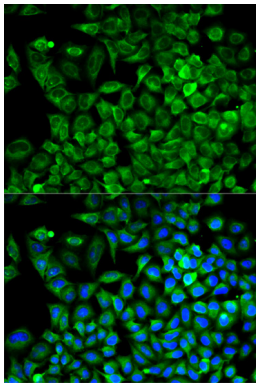
## Application Details

WB  1:500 - 1:2000IF  1:20 - 1:100

## Images



Western blot analysis of extracts of various cell lines, using ALDOA at 1:1000 dilution.



Immunofluorescence analysis of A549 cells using ALDOA .  
Blue: DAPI for nuclear staining.

## Background

Aldolase (fructose biphosphate aldolase), a glycolytic enzyme, catalyzes the conversion of fructose 1, 6-bisphosphate to 3-phosphoglyceraldehyde. This ubiquitous enzyme is present as three different isozymes: aldolase A, aldolase B, and aldolase C. Studies suggest the potential diagnostic value of quantitative analysis of aldolase A for hepatocarcinoma (1). Furthermore, the change in aldolase B gene expression levels has also been observed in certain patients with this primary tumor (2,3).

Note: This product is for in vitro research use only