

## RRM1 Antibody

Catalog No: #32186

Package Size: #32186-1 50ul #32186-2 100ul

Orders: order@signalwayantibody.com

Support: tech@signalwayantibody.com

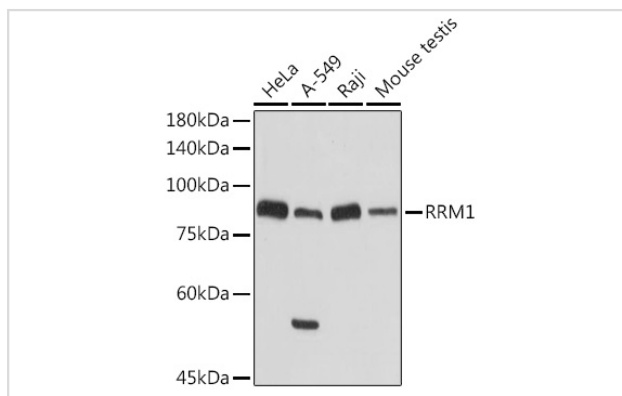
## Description

Product Name	RRM1 Antibody
Host Species	Rabbit
Clonality	Polyclonal
Isotype	IgG
Purification	Affinity purification
Applications	WB,IHC,IF
Species Reactivity	Human,Mouse,Rat
Specificity	The antibody detects endogenous level of total RRM1 protein.
Immunogen Type	Recombinant Protein
Immunogen Description	Recombinant fusion protein of human RRM1 (NP_001024.1).
Target Name	RRM1
Other Names	RRM1;R1;RIR1;RR1
Accession No.	Uniprot:P23921GenID:6240
Uniprot	P23921
GenID	6240
SDS-PAGE MW	90KDa
Concentration	1.0mg/ml
Formulation	PBS with 0.02% sodium azide,50% glycerol,pH7.3.
Storage	Store at -20°C. Avoid freeze / thaw cycles.

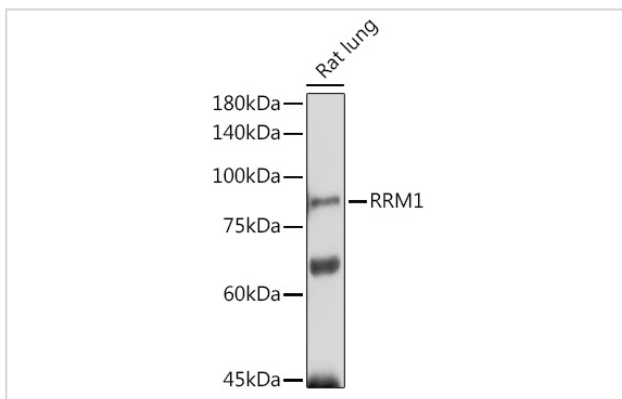
## Application Details

WB 1:500 - 1:2000 IHC 1:50 - 1:200 IF 1:50 - 1:200

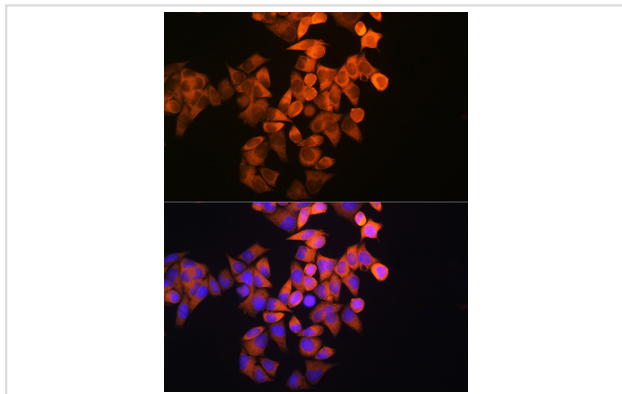
## Images



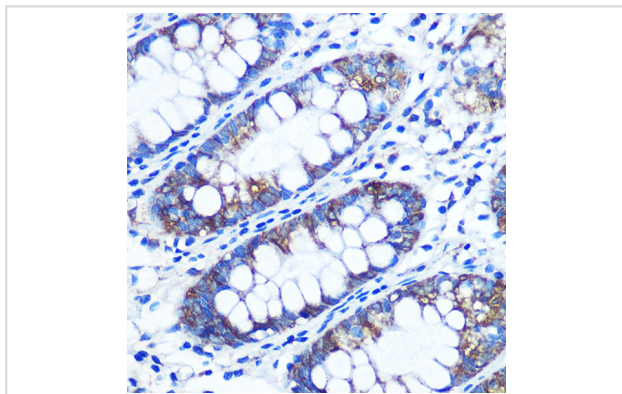
Western blot analysis of extracts of various cell lines, using RRM1 antibody.



Western blot analysis of extracts of Rat lung, using RRM1 antibody.



Immunofluorescence analysis of HeLa cells using RRM1 Rabbit pAb.



Immunohistochemistry of paraffin-embedded human colon using RRM1 Rabbit pAb.

## Background

This gene encodes the large and catalytic subunit of ribonucleotide reductase, an enzyme essential for the conversion of ribonucleotides into deoxyribonucleotides. A pool of available deoxyribonucleotides is important for DNA replication during S phase of the cell cycle as well as multiple DNA repair processes. Alternative splicing results in multiple transcript variants.

Note: This product is for in vitro research use only