

BCL2L2 Antibody

Catalog No: #32190

Package Size: #32190-1 50ul #32190-2 100ul

Orders: order@signalwayantibody.comSupport: tech@signalwayantibody.com

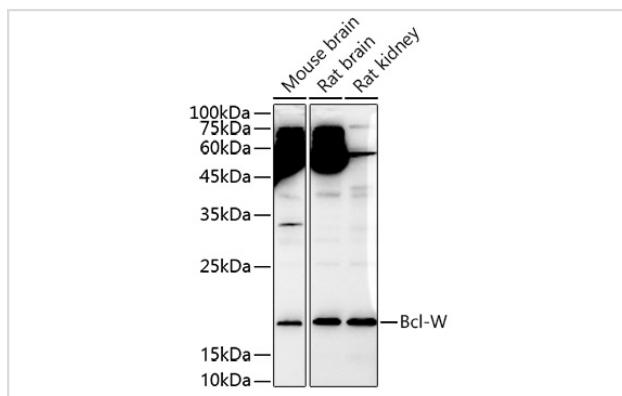
Description

Product Name	BCL2L2 Antibody
Host Species	Rabbit
Clonality	Polyclonal
Isotype	IgG
Purification	Affinity purification
Applications	WB
Species Reactivity	Human,Mouse,Rat
Specificity	The antibody detects endogenous level of total BCL2L2 protein.
Immunogen Type	Recombinant Protein
Immunogen Description	Recombinant fusion protein of human Bcl-W (NP_001186768.1).
Target Name	BCL2L2
Other Names	BCL2L2;BCL-W;BCL2-L-2;BCLW;PPP1R51
Accession No.	Uniprot:Q92843GeneID:599
Uniprot	Q92843
GeneID	599
SDS-PAGE MW	18kDa
Concentration	1.0mg/ml
Formulation	PBS with 0.02% sodium azide,50% glycerol,pH7.3.
Storage	Store at -20°C. Avoid freeze / thaw cycles.

Application Details

WB □ 1:500 - 1:2000

Images



Western blot analysis of extracts of various cell lines, using Bcl-W antibody.

Background

This gene encodes a member of the BCL-2 protein family. The proteins of this family form hetero- or homodimers and act as anti- and pro-apoptotic regulators. Expression of this gene in cells has been shown to contribute to reduced cell apoptosis under cytotoxic conditions. Studies of the related gene in mice indicated a role in the survival of NGF- and BDNF-dependent neurons. Mutation and knockout studies of the mouse gene demonstrated an essential role in adult spermatogenesis. Alternative splicing results in multiple transcript variants. Read-through transcription also exists between this gene and the neighboring downstream PABPN1 (poly(A) binding protein, nuclear 1) gene.

Note: This product is for in vitro research use only