

## RHEB Antibody

Catalog No: #32196

Package Size: #32196-1 50ul #32196-2 100ul

Orders: [order@signalwayantibody.com](mailto:order@signalwayantibody.com)Support: [tech@signalwayantibody.com](mailto:tech@signalwayantibody.com)

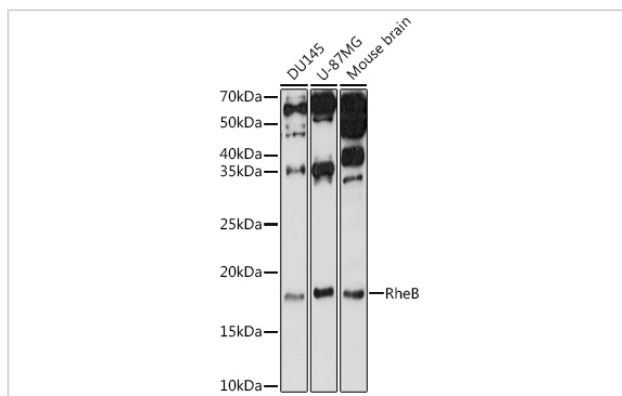
## Description

|                       |  |
|-----------------------|--|
| Product Name          | RHEB Antibody  |
| Host Species          | Rabbit   |
| Clonality             | Polyclonal   |
| Isotype               | IgG  |
| Purification          | Affinity purification  |
| Applications          | WB,IF  |
| Species Reactivity    | Human,Mouse,Rat  |
| Specificity           | The antibody detects endogenous level of total RHEB protein. |
| Immunogen Type        | Recombinant Protein  |
| Immunogen Description | Recombinant fusion protein of human RheB (NP_005605.1).      |
| Target Name           | RHEB   |
| Other Names           | RHEB;RHEB2   |
| Accession No.         | Uniprot:Q15382GeneID:6009                                    |
| Uniprot               | Q15382   |
| GeneID                | 6009   |
| SDS-PAGE MW           | 17KDa  |
| Concentration         | 1.0mg/ml   |
| Formulation           | PBS with 0.02% sodium azide,50% glycerol,pH7.3.              |
| Storage               | Store at -20°C. Avoid freeze / thaw cycles.                  |

## Application Details

WB □ 1:500 - 1:2000 IF □ 1:50 - 1:200

## Images



Western blot analysis of extracts of various cell lines, using RheB antibody.

## Background

---

This gene is a member of the small GTPase superfamily and encodes a lipid-anchored, cell membrane protein with five repeats of the RAS-related GTP-binding region. This protein is vital in regulation of growth and cell cycle progression due to its role in the insulin/TOR/S6K signaling pathway. The protein has GTPase activity and shuttles between a GDP-bound form and a GTP-bound form, and farnesylation of the protein is required for this activity. Three pseudogenes have been mapped, two on chromosome 10 and one on chromosome 22.

---

Note: This product is for in vitro research use only