

RAB11A Antibody

Catalog No: #32197

Package Size: #32197-1 50ul #32197-2 100ul

Orders: order@signalwayantibody.comSupport: tech@signalwayantibody.com

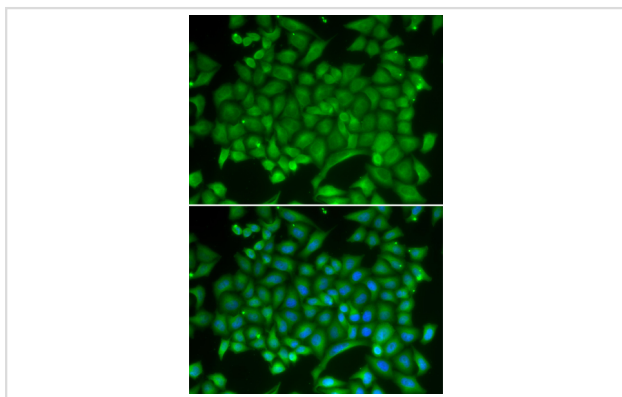
Description

Product Name	RAB11A Antibody
Host Species	Rabbit
Clonality	Polyclonal
Isotype	IgG
Purification	Affinity purification
Applications	WB,IF
Species Reactivity	Human,Rat
Specificity	The antibody detects endogenous level of total RAB11A protein.
Immunogen Type	Recombinant Protein
Immunogen Description	Recombinant fusion protein of human RAB11A (NP_004654.1).
Target Name	RAB11A
Other Names	RAB11A;YL8
Accession No.	Uniprot:P62491GenelD:8766
Uniprot	P62491
GenelD	8766
SDS-PAGE MW	24kDa
Concentration	1.0mg/ml
Formulation	PBS with 0.02% sodium azide,50% glycerol,pH7.3.
Storage	Store at -20°C. Avoid freeze / thaw cycles.

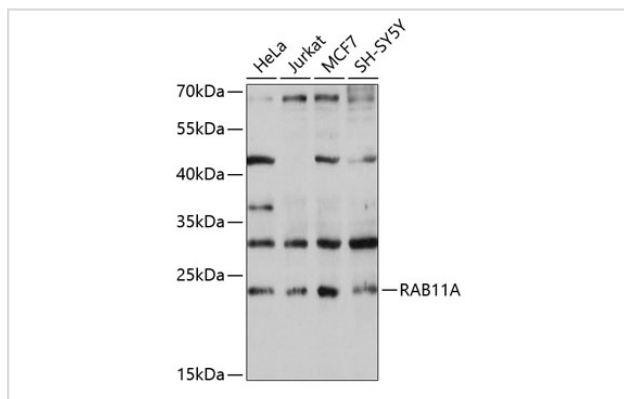
Application Details

WB □ 1:500 - 1:2000 IF □ 1:50 - 1:200

Images



Immunofluorescence analysis of MCF-7 cells using RAB11A antibody.



Western blot analysis of extracts of various cell lines, using RAB11A antibody.

Background

The protein encoded by this gene belongs to the Rab family of the small GTPase superfamily. It is associated with both constitutive and regulated secretory pathways, and may be involved in protein transport. Two transcript variants encoding different isoforms have been found for this gene.

Note: This product is for in vitro research use only