

GAS2 Antibody

Catalog No: #32198

Package Size: #32198-1 50ul #32198-2 100ul

Orders: order@signalwayantibody.comSupport: tech@signalwayantibody.com

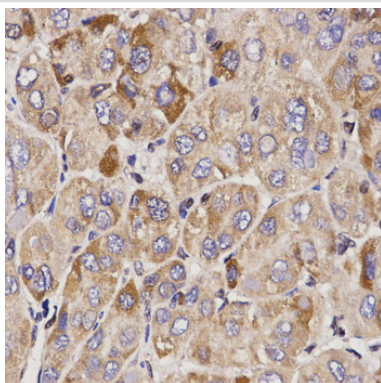
Description

Product Name	GAS2 Antibody
Host Species	Rabbit
Clonality	Polyclonal
Isotype	IgG
Purification	Affinity purification
Applications	WB,IHC
Species Reactivity	Human,Mouse
Specificity	The antibody detects endogenous level of total GAS2 protein.
Immunogen Type	Recombinant Protein
Immunogen Description	Recombinant fusion protein of human GAS2 (NP_005247.1).
Target Name	GAS2
Other Names	GAS2;GAS-2
Accession No.	Uniprot:O43903GeneID:2620
Uniprot	O43903
GeneID	2620
SDS-PAGE MW	37kDa
Concentration	1.0mg/ml
Formulation	PBS with 0.02% sodium azide,50% glycerol,pH7.3.
Storage	Store at -20°C. Avoid freeze / thaw cycles.

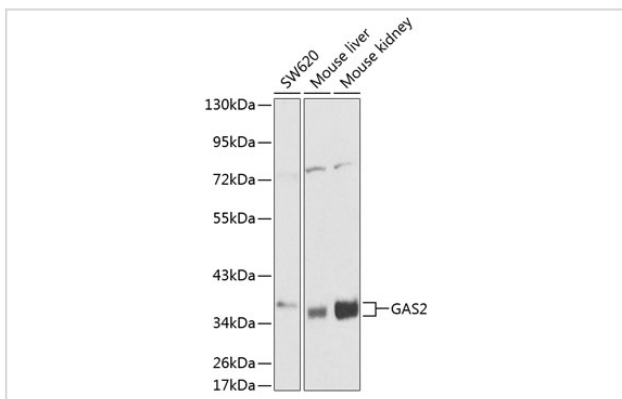
Application Details

WB □ 1:500 - 1:2000 IHC □ 1:50 - 1:200

Images



Immunohistochemistry of paraffin-embedded human liver cancer using GAS2 antibody.



Western blot analysis of extracts of various cell lines, using GAS2 antibody.

Background

The protein encoded by this gene is a caspase-3 substrate that plays a role in regulating microfilament and cell shape changes during apoptosis. It can also modulate cell susceptibility to p53-dependent apoptosis by inhibiting calpain activity. Alternative splicing results in multiple transcript variants.

Note: This product is for in vitro research use only