

STUB1 Antibody

Catalog No: #32199

Package Size: #32199-1 50ul #32199-2 100ul

Orders: order@signalwayantibody.com

Support: tech@signalwayantibody.com

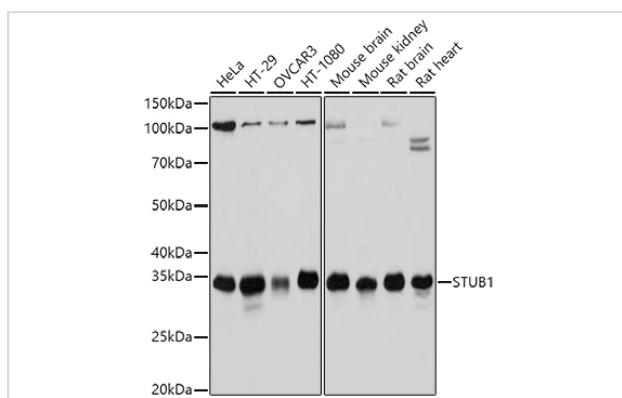
Description

Product Name	STUB1 Antibody
Host Species	Rabbit
Clonality	Polyclonal
Isotype	IgG
Purification	Affinity purification
Applications	WB,IF
Species Reactivity	Human,Mouse,Rat
Specificity	The antibody detects endogenous level of total STUB1 protein.
Immunogen Type	Recombinant Protein
Immunogen Description	Recombinant fusion protein of human STUB1 (NP_005852.2).
Target Name	STUB1
Other Names	STUB1;CHIP;HSPABP2;NY-CO-7;SCAR16;SDCCAG7;UBOX1
Accession No.	Uniprot:Q9UNE7GeneID:10273
Uniprot	Q9UNE7
GeneID	10273
SDS-PAGE MW	34kDa
Concentration	1.0mg/ml
Formulation	PBS with 0.02% sodium azide,50% glycerol,pH7.3.
Storage	Store at -20°C. Avoid freeze / thaw cycles.

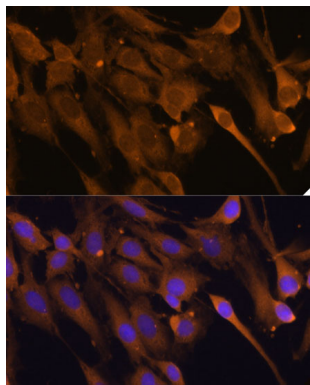
Application Details

WB □ 1:500 - 1:2000 IF □ 1:50 - 1:200

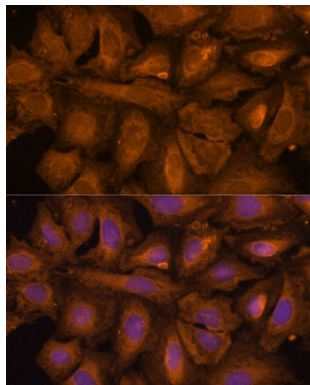
Images



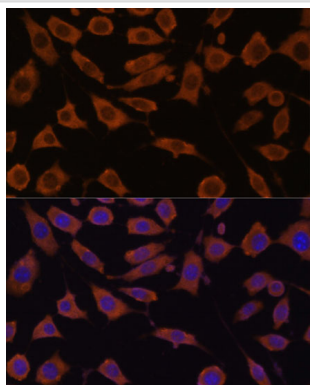
Western blot analysis of extracts of various cell lines, using STUB1 antibody.



Immunofluorescence analysis of C6 cells using STUB1 Polyclonal Antibody.



Immunofluorescence analysis of U-2 OS cells using STUB1 Polyclonal Antibody.



Immunofluorescence analysis of L929 cells using STUB1 Polyclonal Antibody.

Background

This gene encodes a protein containing tetratricopeptide repeat and a U-box that functions as a ubiquitin ligase/cochaperone. The encoded protein binds to and ubiquitinates shock cognate 71 kDa protein (Hspa8) and DNA polymerase beta (Polb), among other targets. Mutations in this gene cause spinocerebellar ataxia, autosomal recessive 16. Alternative splicing results in multiple transcript variants. There is a pseudogene for this gene on chromosome 2.

Note: This product is for in vitro research use only