

KCNE1 Antibody

Catalog No: #32205

Package Size: #32205-1 50ul #32205-2 100ul

Orders: order@signalwayantibody.com

Support: tech@signalwayantibody.com

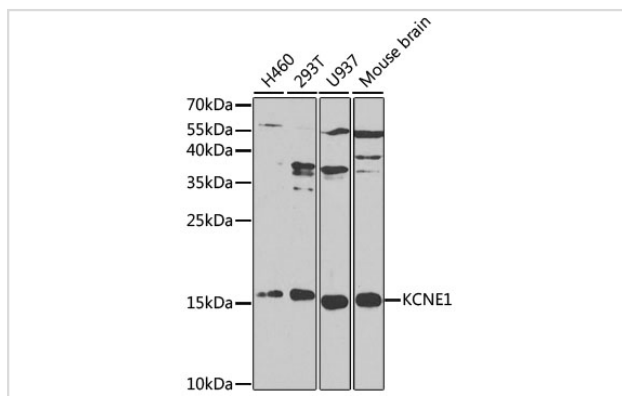
Description

Product Name	KCNE1 Antibody
Host Species	Rabbit
Clonality	Polyclonal
Purification	Antibodies were purified by affinity purification using immunogen.
Applications	WB
Species Reactivity	Human,Mouse
Specificity	The antibody detects endogenous level of total KCNE1 protein.
Immunogen Type	Recombinant Protein
Immunogen Description	Recombinant protein of human KCNE1.
Target Name	KCNE1
Other Names	KCNE1; FLJ18426; FLJ38123; FLJ94103; ISK
Accession No.	Swiss-Prot:P15382NCBI Gene ID:3753
Uniprot	P15382
GeneID	3753;
SDS-PAGE MW	15KD
Concentration	1.0mg/ml
Formulation	Supplied at 1.0mg/mL in phosphate buffered saline (without Mg ²⁺ and Ca ²⁺), pH 7.4, 150mM NaCl, 0.02% sodium azide and 50% glycerol.
Storage	Store at -20°C

Application Details

WB □ 1:500 - 1:2000

Images



Western blot analysis of extracts of various cell lines, using KCNE1 at 1:1000 dilution.

Background

Voltage-gated potassium channels play a variety of important roles in human health and disease (1,2). KCNE1, also known as MinK, belongs to a family of small transmembrane proteins (KCNE1, 2, 3, 4, and KCNE1L) that modulate the activity of several voltage-gated K⁺ channels (3-5). KCNE1 functions as the modulatory β -subunit of the pore-forming α -subunit KCNQ1, and alters several biophysical properties of KCNQ1 channels (6,7). Research studies have shown that several inherited mutations in KCNE1 result in long QT syndrome (8-10) and deafness (11).

Note: This product is for in vitro research use only