

## TACSTD1 Antibody

Catalog No: #32206

Package Size: #32206-1 50ul #32206-2 100ul

Orders: order@signalwayantibody.com

Support: tech@signalwayantibody.com

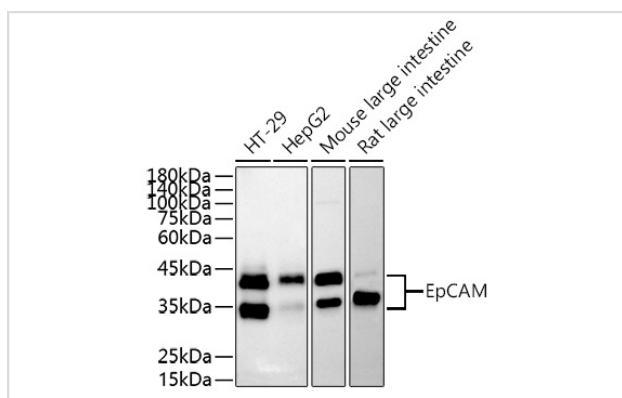
## Description

Product Name	TACSTD1 Antibody
Host Species	Rabbit
Clonality	Polyclonal
Isotype	IgG
Purification	Affinity purification
Applications	WB,IF
Species Reactivity	Human,Mouse,Rat
Specificity	The antibody detects endogenous level of total TACSTD1 protein.
Immunogen Type	Recombinant Protein
Immunogen Description	Recombinant fusion protein of human EpCAM (NP_002345.2).
Target Name	TACSTD1
Other Names	EPCAM;DIAR5;EGP-2;EGP314;EGP40;ESA;HNPC8;KS1/4;KSA;M4S1;MIC18;MK-1;TACSTD1;TROP1
Accession No.	Uniprot:P16422GenelD:4072
Uniprot	P16422
GenelD	4072
SDS-PAGE MW	35-45KDa
Concentration	1.0mg/ml
Formulation	PBS with 0.02% sodium azide,50% glycerol,pH7.3.
Storage	Store at -20°C. Avoid freeze / thaw cycles.

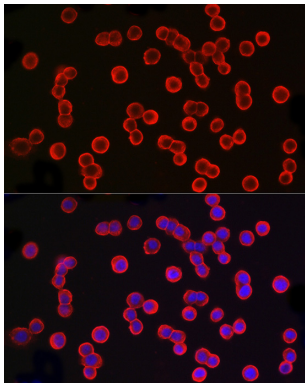
## Application Details

WB □ 1:500 - 1:2000 IF □ 1:50 - 1:200

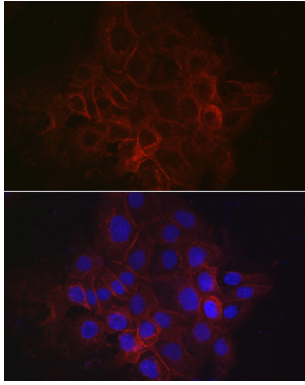
## Images



Western blot analysis of extracts of various cell lines, using EpCAM antibody.



Immunofluorescence analysis of HT-29 cells using EpCAM antibody.



Immunofluorescence analysis of A-431 cells using EpCAM antibody.

## Background

This gene encodes a carcinoma-associated antigen and is a member of a family that includes at least two type I membrane proteins. This antigen is expressed on most normal epithelial cells and gastrointestinal carcinomas and functions as a homotypic calcium-independent cell adhesion molecule. The antigen is being used as a target for immunotherapy treatment of human carcinomas. Mutations in this gene result in congenital tufting enteropathy.

Note: This product is for in vitro research use only