

RAB5A Antibody

Catalog No: #32209

Package Size: #32209-1 50ul #32209-2 100ul

Orders: order@signalwayantibody.com

Support: tech@signalwayantibody.com

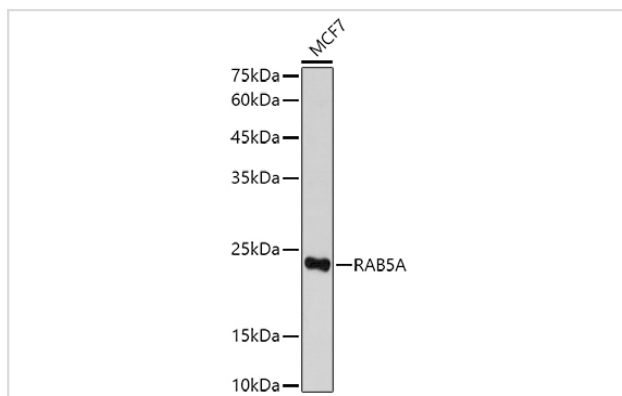
Description

Product Name	RAB5A Antibody
Host Species	Rabbit
Clonality	Polyclonal
Isotype	IgG
Purification	Affinity purification
Applications	WB,IHC,IF
Species Reactivity	Human,Mouse,Rat
Specificity	The antibody detects endogenous level of total RAB5A protein.
Immunogen Type	Recombinant Protein
Immunogen Description	Recombinant fusion protein of human RAB5A (NP_004153.2).
Target Name	RAB5A
Other Names	RAB5A;RAB5
Accession No.	Uniprot:P20339GeneID:5868
Uniprot	P20339
GeneID	5868
SDS-PAGE MW	23kDa
Concentration	1.0mg/ml
Formulation	PBS with 0.02% sodium azide,50% glycerol,pH7.3.
Storage	Store at -20°C. Avoid freeze / thaw cycles.

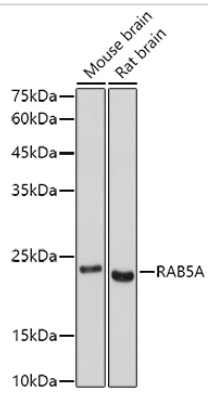
Application Details

WB 1:500 - 1:2000 IHC 1:50 - 1:200 IF 1:50 - 1:200

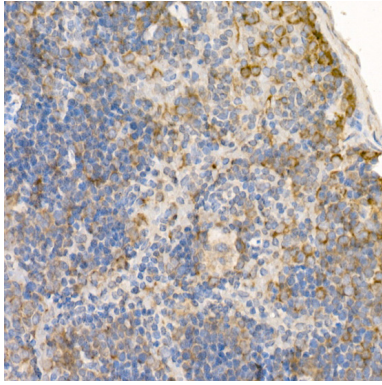
Images



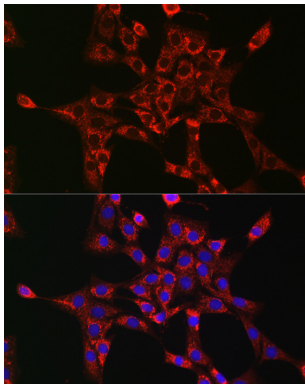
Western blot analysis of extracts of MCF7 cells, using RAB5A antibody.



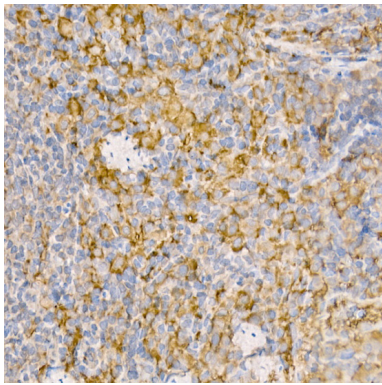
Western blot analysis of extracts of various cell lines, using RAB5A antibody.



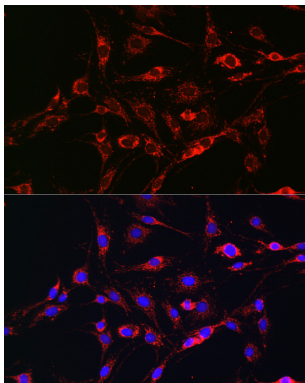
Immunohistochemistry of paraffin-embedded mouse spleen using [KO Validated] RAB5A Rabbit pAb.



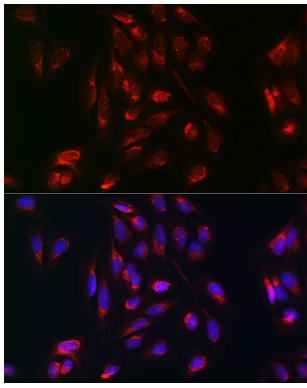
Immunofluorescence analysis of NIH-3T3 cells using [KO Validated] RAB5A Rabbit pAb.



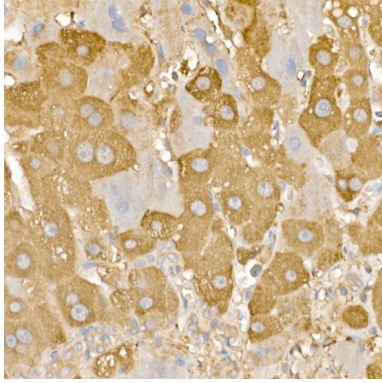
Immunohistochemistry of paraffin-embedded rat spleen using [KO Validated] RAB5A Rabbit pAb.



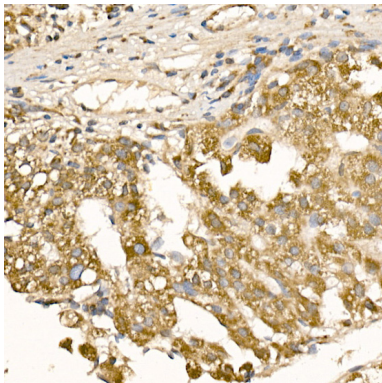
Immunofluorescence analysis of C6 cells using [KO Validated] RAB5A Rabbit pAb.



Immunofluorescence analysis of U-2 OS cells using [KO Validated] RAB5A Rabbit pAb.



Immunohistochemistry of paraffin-embedded human liver using [KO Validated] RAB5A Rabbit pAb.



Immunohistochemistry of paraffin-embedded human liver cancer using [KO Validated] RAB5A Rabbit pAb.

Background

RAB5A (RAB5A, member RAS oncogene family) is a protein-coding gene. Diseases associated with RAB5A include borna disease, and venezuelan equine encephalitis. GO annotations related to this gene include GDP binding and GTP binding. An important paralog of this gene is RAB20.

Note: This product is for in vitro research use only