

GGA2 Antibody

Catalog No: #32212

Package Size: #32212-1 50ul #32212-2 100ul

Orders: order@signalwayantibody.comSupport: tech@signalwayantibody.com

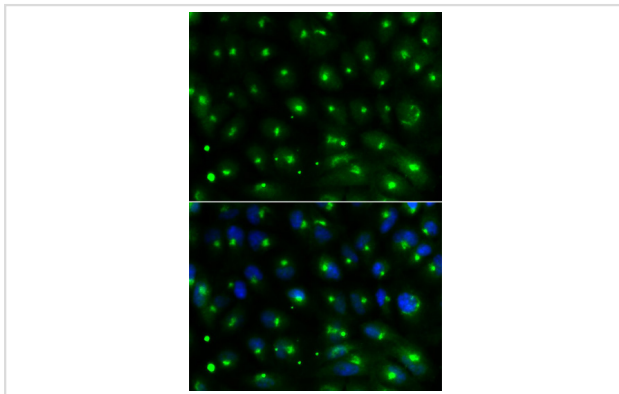
Description

Product Name	GGA2 Antibody
Host Species	Rabbit
Clonality	Polyclonal
Isotype	IgG
Purification	Affinity purification
Applications	WB,IF
Species Reactivity	Human,Mouse
Specificity	The antibody detects endogenous level of total GGA2 protein.
Immunogen Type	Recombinant Protein
Immunogen Description	Recombinant fusion protein of human GGA2 (NP_055859.1).
Target Name	GGA2
Other Names	GGA2;VEAR
Accession No.	Uniprot:Q9UJY4GeneID:23062
Uniprot	Q9UJY4
GeneID	23062
SDS-PAGE MW	72-80kDa
Concentration	1.0mg/ml
Formulation	PBS with 0.02% sodium azide,50% glycerol,pH7.3.
Storage	Store at -20°C. Avoid freeze / thaw cycles.

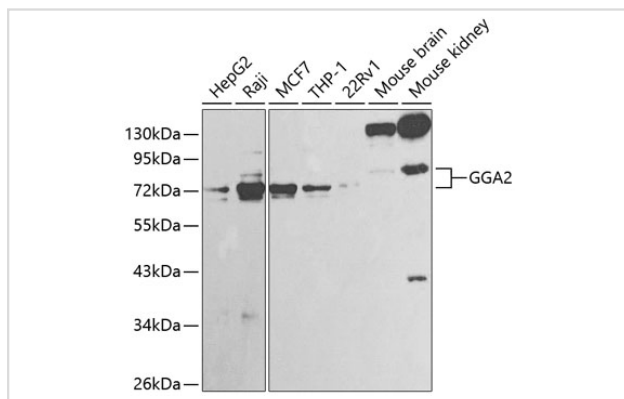
Application Details

WB □ 1:500 - 1:2000IF □ 1:50 - 1:200

Images



Immunofluorescence analysis of MCF-7 cells using GGA2 antibody.



Western blot analysis of extracts of various cell lines, using GGA2 antibody.

Background

This gene encodes a member of the Golgi-localized, gamma adaptin ear-containing, ARF-binding (GGA) family. This family includes ubiquitous coat proteins that regulate the trafficking of proteins between the trans-Golgi network and the lysosome. These proteins share an amino-terminal VHS domain which mediates sorting of the mannose 6-phosphate receptors at the trans-Golgi network. They also contain a carboxy-terminal region with homology to the ear domain of gamma-adaptins. This family member may play a significant role in cargo molecules regulation and clathrin-coated vesicle assembly.

Note: This product is for in vitro research use only