

NRAS/HRAS/KRAS Antibody

Catalog No: #32216

Package Size: #32216-1 50ul #32216-2 100ul

Orders: order@signalwayantibody.comSupport: tech@signalwayantibody.com

Description

Product Name	NRAS/HRAS/KRAS Antibody
Host Species	Rabbit
Clonality	Polyclonal
Isotype	IgG
Purification	Affinity purification
Applications	WB,IHC,IF
Species Reactivity	Human,Mouse,Rat
Specificity	The antibody Recognizes endogenous levels of NRAS/HRAS/KRAS protein.
Immunogen Description	Recombinant protein of human KRAS
Target Name	NRAS; HRAS; KRAS
Other Names	KRAS;C-K-RAS;CFC2;K-RAS2A;K-RAS2B;K-RAS4A;K-RAS4B;KI-RAS;KRAS1;KRAS2;NS;NS3;RALD;RASK 2;c-Ki-ras2
Accession No.	Uniprot:P01116GeneID:3845
Uniprot	P01116
GeneID	3845
SDS-PAGE MW	21KDa
Concentration	1.0mg/ml
Formulation	PBS with 0.02% sodium azide,50% glycerol,pH7.3.
Storage	Store at -20°C. Avoid freeze / thaw cycles.

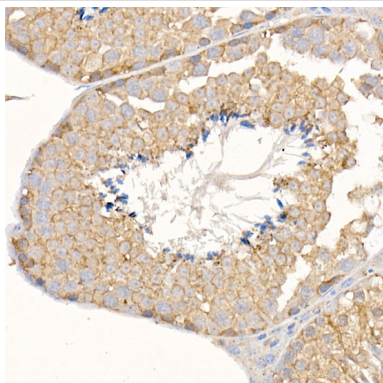
Application Details

WB □ 1:500 - 1:1000

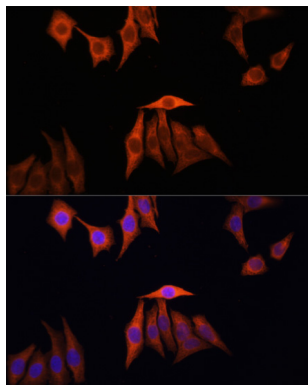
IHC □ 1:50 - 1:200

IF □ 1:50 - 1:200

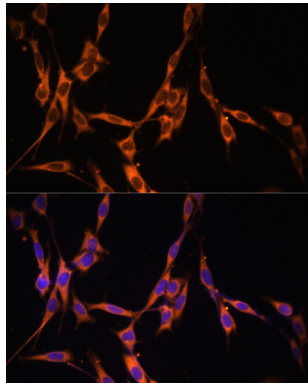
Images



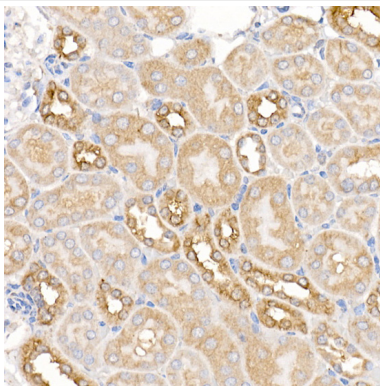
Immunohistochemistry of paraffin-embedded mouse testis using KRAS Rabbit pAb.



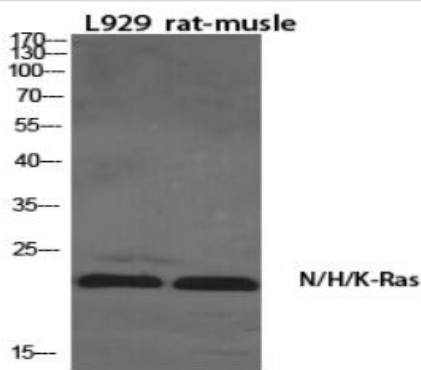
Immunofluorescence analysis of HeLa cells using KRAS antibody.



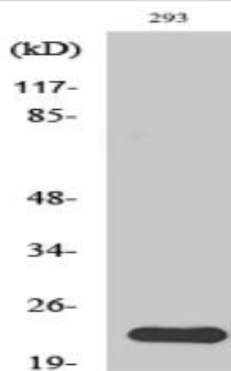
Immunofluorescence analysis of NIH/3T3 cells using KRAS antibody.



Immunohistochemistry of paraffin-embedded mouse kidney using KRAS Rabbit pAb.



Western Blot analysis of various cells using N/H/K-Ras PolyclonalAntibody diluted at 1:1000



Western Blot analysis of 293 cells using N/H/K-Ras PolyclonalAntibody diluted at 1:1000

Note: This product is for in vitro research use only