

## MMP1 Antibody

Catalog No: #32217

Package Size: #32217-1 50ul #32217-2 100ul

Orders: order@signalwayantibody.com

Support: tech@signalwayantibody.com

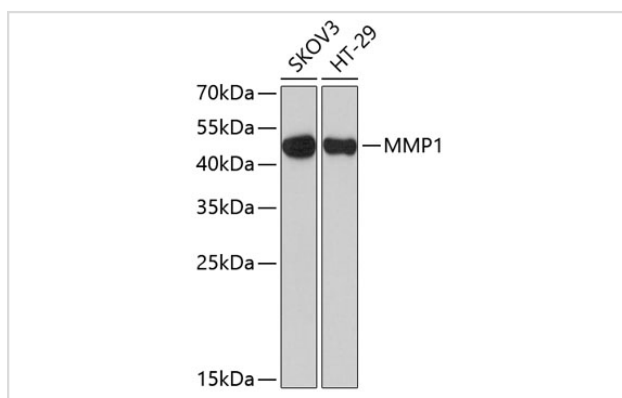
## Description

Product Name	MMP1 Antibody
Host Species	Rabbit
Clonality	Polyclonal
Purification	Antibodies were purified by affinity purification using immunogen.
Applications	WB
Species Reactivity	Human
Specificity	The antibody detects endogenous level of total MMP1 protein.
Immunogen Type	Recombinant Protein
Immunogen Description	Recombinant protein of human ARRB2.
Target Name	MMP1
Other Names	MMP1; CLG; CLGN;
Accession No.	Swiss-Prot:P03956NCBI Gene ID:4312
Uniprot	P03956
GeneID	4312;
SDS-PAGE MW	54KD
Concentration	1.0mg/ml
Formulation	Supplied at 1.0mg/mL in phosphate buffered saline (without Mg <sup>2+</sup> and Ca <sup>2+</sup> ), pH 7.4, 150mM NaCl, 0.02% sodium azide and 50% glycerol.
Storage	Store at -20°C

## Application Details

WB □ 1:500 - 1:2000

## Images



Western blot analysis of extracts of various cell lines, using MMP1 at 1:1000 dilution.

## Background

---

Proteins of the matrix metalloproteinase (MMP) family are involved in the breakdown of extracellular matrix in normal physiological processes, such as embryonic development, reproduction, and tissue remodeling, as well as in disease processes, such as arthritis and metastasis. Most MMP's are secreted as inactive proproteins which are activated when cleaved by extracellular proteinases. This gene encodes a secreted enzyme which breaks down the interstitial collagens, types I, II, and III. The gene is part of a cluster of MMP genes which localize to chromosome 11q22.3. Alternative splicing results in multiple transcript variants.

---

Note: This product is for in vitro research use only