

## FCGR1A Antibody

Catalog No: #32221

Package Size: #32221-1 50ul #32221-2 100ul

Orders: [order@signalwayantibody.com](mailto:order@signalwayantibody.com)Support: [tech@signalwayantibody.com](mailto:tech@signalwayantibody.com)

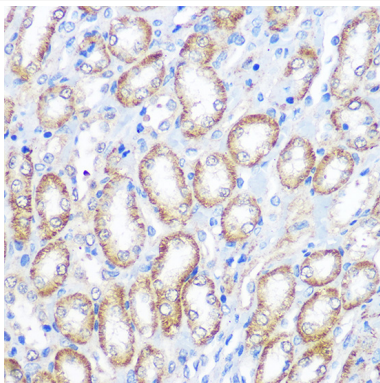
## Description

Product Name	FCGR1A Antibody
Host Species	Rabbit
Clonality	Polyclonal
Isotype	IgG
Purification	Affinity purification
Applications	WB,IHC,IF
Species Reactivity	Human,Mouse,Rat
Specificity	The antibody detects endogenous level of total FCGR1A protein.
Immunogen Type	Recombinant Protein
Immunogen Description	Recombinant fusion protein of human FCGR1A (NP_000557.1).
Target Name	FCGR1A
Other Names	FCGR1A;CD64;CD64A;FCRI;IGFR1
Accession No.	Uniprot:P12314GeneID:2209
Uniprot	P12314
GeneID	2209
SDS-PAGE MW	65-70KDa
Concentration	1.0mg/ml
Formulation	PBS with 0.02% sodium azide,50% glycerol,pH7.3.
Storage	Store at -20°C. Avoid freeze / thaw cycles.

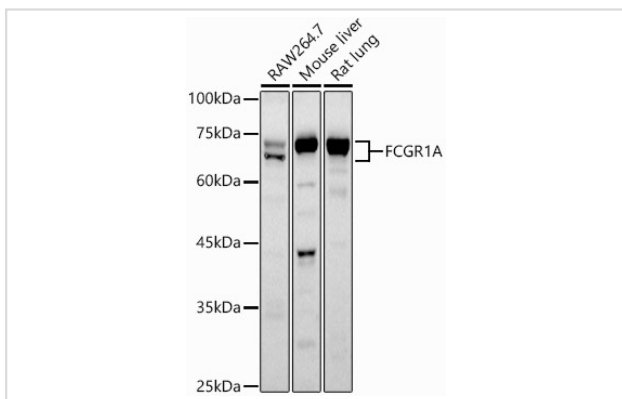
## Application Details

WB □ 1:500 - 1:2000 IHC □ 1:50 - 1:100 IF □ 1:50 - 1:200

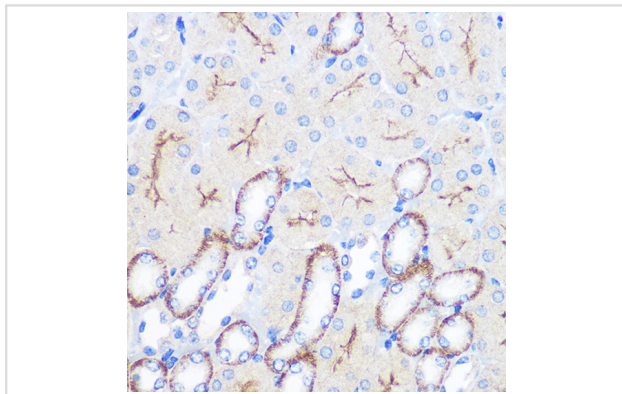
## Images



Immunohistochemistry of paraffin-embedded rat kidney using FCGR1A Rabbit pAb.



Western blot analysis of extracts of various cell lines, using FCGR1A antibody.



Immunohistochemistry of paraffin-embedded mouse kidney using FCGR1A Rabbit pAb.

## Background

This gene encodes a protein that plays an important role in the immune response. This protein is a high-affinity Fc-gamma receptor. The gene is one of three related gene family members located on chromosome 1.

Note: This product is for in vitro research use only