

MMP3 Antibody

Catalog No: #32225

Package Size: #32225-1 50ul #32225-2 100ul

Orders: order@signalwayantibody.com

Support: tech@signalwayantibody.com

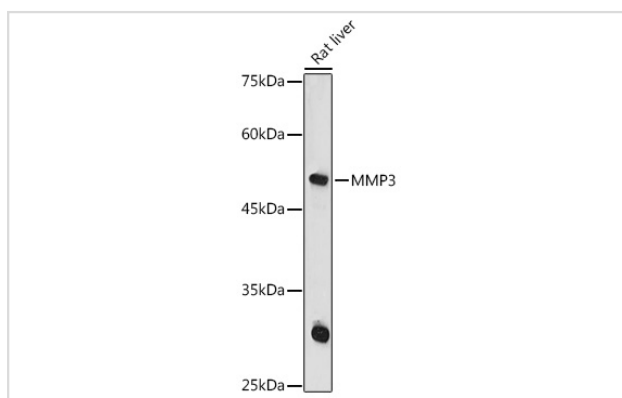
Description

Product Name	MMP3 Antibody
Host Species	Rabbit
Clonality	Polyclonal
Isotype	IgG
Purification	Affinity purification
Applications	WB,IHC,IF
Species Reactivity	Human,Mouse,Rat
Specificity	The antibody detects endogenous level of total MMP3 protein.
Immunogen Type	Recombinant Protein
Immunogen Description	Recombinant fusion protein of human MMP3 (NP_002413.1).
Target Name	MMP3
Other Names	MMP3;CHDS6;MMP-3;SL-1;STMY;STMY1;STR1
Accession No.	Uniprot:P08254GenelD:4314
Uniprot	P08254
GenelD	4314
SDS-PAGE MW	60KDa/47KDa
Concentration	1.0mg/ml
Formulation	PBS with 0.02% sodium azide,50% glycerol,pH7.3.
Storage	Store at -20°C. Avoid freeze / thaw cycles.

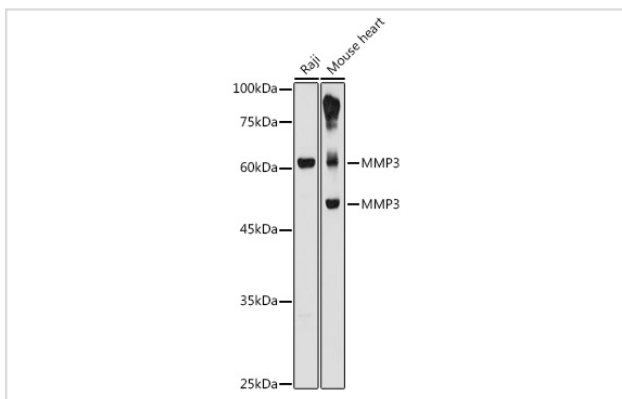
Application Details

WB □ 1:500 - 1:2000 IHC □ 1:50 - 1:200 IF □ 1:50 - 1:100

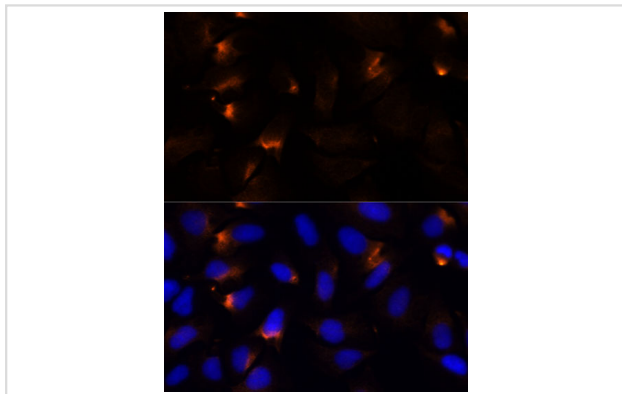
Images



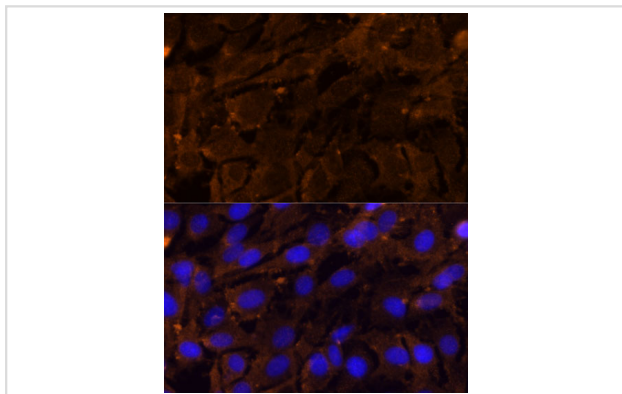
Western blot analysis of extracts of Rat liver, using MMP3 antibody.



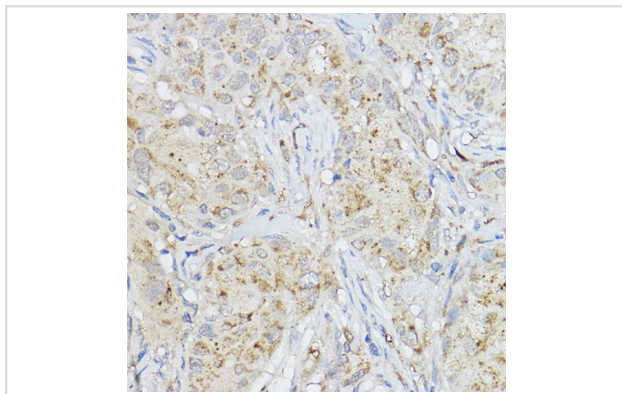
Western blot analysis of extracts of various cell lines, using MMP3 antibody.



Immunofluorescence analysis of U-2 OS cells using MMP3 Polyclonal Antibody.



Immunofluorescence analysis of C6 cells using MMP3 Polyclonal Antibody.



Immunohistochemistry of paraffin-embedded human breast cancer using MMP3 Rabbit pAb.

Background

Proteins of the matrix metalloproteinase (MMP) family are involved in the breakdown of extracellular matrix in normal physiological processes, such as embryonic development, reproduction, and tissue remodeling, as well as in disease processes, such as arthritis and metastasis. Most MMP's are secreted as inactive proproteins which are activated when cleaved by extracellular proteinases. This gene encodes an enzyme which degrades fibronectin, laminin, collagens III, IV, IX, and X, and cartilage proteoglycans. The enzyme is thought to be involved in wound repair, progression of atherosclerosis, and tumor initiation. The gene is part of a cluster of MMP genes which localize to chromosome 11q22.3.

Note: This product is for in vitro research use only