

RASSF1 Antibody

Catalog No: #32226

Package Size: #32226-1 50ul #32226-2 100ul

Orders: order@signalwayantibody.com

Support: tech@signalwayantibody.com

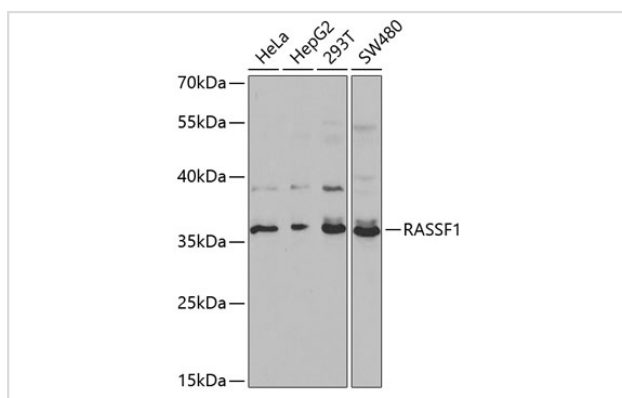
Description

Product Name	RASSF1 Antibody
Host Species	Rabbit
Clonality	Polyclonal
Isotype	IgG
Purification	Affinity purification
Applications	WB
Species Reactivity	Human,Mouse
Specificity	The antibody detects endogenous level of total RASSF1 protein.
Immunogen Type	Recombinant Protein
Immunogen Description	Recombinant fusion protein of human RASSF1 (NP_009113.3).
Target Name	RASSF1
Other Names	RASSF1;123F2;NORE2A;RASSF1A;RDA32;REH3P21
Accession No.	Uniprot:Q9NS23GeneID:11186
Uniprot	Q9NS23
GeneID	11186
SDS-PAGE MW	39kDa
Concentration	1.0mg/ml
Formulation	PBS with 0.02% sodium azide,50% glycerol,pH7.3.
Storage	Store at -20°C. Avoid freeze / thaw cycles.

Application Details

WB □ 1:500 - 1:2000

Images



Western blot analysis of extracts of various cell lines, using RASSF1 antibody.

Background

This gene encodes a protein similar to the RAS effector proteins. Loss or altered expression of this gene has been associated with the pathogenesis of a variety of cancers, which suggests the tumor suppressor function of this gene. The inactivation of this gene was found to be correlated with the hypermethylation of its CpG-island promoter region. The encoded protein was found to interact with DNA repair protein XPA. The protein was also shown to inhibit the accumulation of cyclin D1, and thus induce cell cycle arrest. Several alternatively spliced transcript variants of this gene encoding distinct isoforms have been reported.

Note: This product is for in vitro research use only