

## GSTM2 Antibody

Catalog No: #32228

Package Size: #32228-1 50ul #32228-2 100ul

Orders: order@signalwayantibody.com

Support: tech@signalwayantibody.com

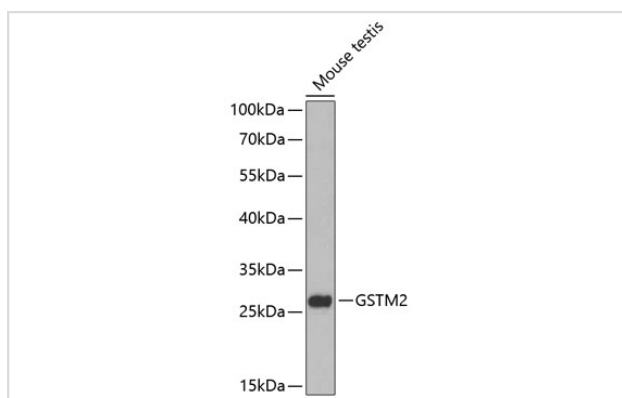
## Description

Product Name	GSTM2 Antibody
Host Species	Rabbit
Clonality	Polyclonal
Isotype	IgG
Purification	Affinity purification
Applications	WB
Species Reactivity	Human,Mouse
Specificity	The antibody detects endogenous level of total GSTM2 protein.
Immunogen Type	Recombinant Protein
Immunogen Description	Recombinant fusion protein of human GSTM2 (NP_000839.1).
Target Name	GSTM2
Other Names	GSTM2;GST4;GSTM;GSTM2-2;GTHMUS
Accession No.	Uniprot:P28161GeneID:2946
Uniprot	P28161
GeneID	2946
SDS-PAGE MW	27kDa
Concentration	1.0mg/ml
Formulation	PBS with 0.02% sodium azide,50% glycerol,pH7.3.
Storage	Store at -20°C. Avoid freeze / thaw cycles.

## Application Details

WB □ 1:500 - 1:2000

## Images



Western blot analysis of extracts of mouse testis, using GSTM2 antibody.

## Background

---

Cytosolic and membrane-bound forms of glutathione S-transferase are encoded by two distinct supergene families. At present, eight distinct classes of the soluble cytoplasmic mammalian glutathione S-transferases have been identified: alpha, kappa, mu, omega, pi, sigma, theta and zeta. This gene encodes a glutathione S-transferase that belongs to the mu class. The mu class of enzymes functions in the detoxification of electrophilic compounds, including carcinogens, therapeutic drugs, environmental toxins and products of oxidative stress, by conjugation with glutathione. The genes encoding the mu class of enzymes are organized in a gene cluster on chromosome 1p13.3 and are known to be highly polymorphic. These genetic variations can change an individual's susceptibility to carcinogens and toxins as well as affect the toxicity and efficacy of certain drugs.

---

Note: This product is for in vitro research use only