

GYPC Antibody

Catalog No: #32247



Package Size: #32247-1 50ul #32247-2 100ul

Orders: order@signalwayantibody.com
Support: tech@signalwayantibody.com

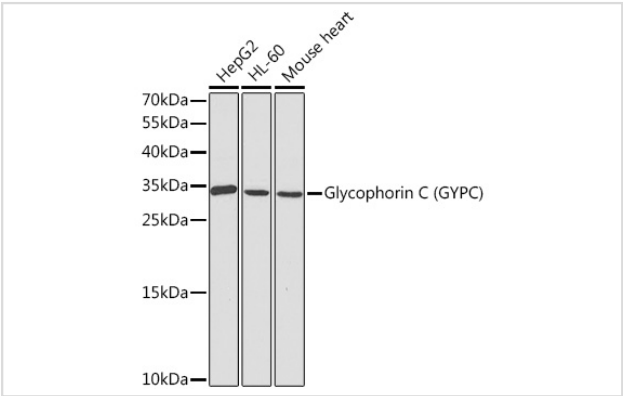
Description

Product Name	GYPC Antibody
Host Species	Rabbit
Clonality	Polyclonal
Isotype	IgG
Purification	Affinity purification
Applications	WB
Species Reactivity	Human,Mouse
Specificity	The antibody detects endogenous level of total GYPC protein.
Immunogen Type	Recombinant Protein
Immunogen Description	Recombinant fusion protein of human Glycophorin C (Glycophorin C (GYPC)) (NP_002092.1).
Target Name	GYPC
Other Names	GYPC;CD236;CD236R;GE;GE:GPC:GPD:GYPD;GPC;GPD;GYPD;PAS-2;PAS-2
Accession No.	Uniprot:P04921GeneID:2995
Uniprot	P04921
GeneID	2995
SDS-PAGE MW	34kDa
Concentration	1.0mg/ml
Formulation	PBS with 0.02% sodium azide,50% glycerol,pH7.3.
Storage	Store at -20°C. Avoid freeze / thaw cycles.

Application Details

WB 1:500 - 1:2000

Images



Western blot analysis of extracts of various cell lines, using Glycophorin C (Glycophorin C (GYPC)) antibody.

Background

Glycophorin C (GYPC) is an integral membrane glycoprotein. It is a minor species carried by human erythrocytes, but plays an important role in regulating the mechanical stability of red cells. A number of glycophorin C mutations have been described. The Gerbich and Yus phenotypes are due to deletion of exon 3 and 2, respectively. The Webb and Duch antigens, also known as glycophorin D, result from single point mutations of the glycophorin C gene. The glycophorin C protein has very little homology with glycophorins A and B. Alternate splicing results in multiple transcript variants.

Note: This product is for in vitro research use only