

CGA Antibody

Catalog No: #32250

Package Size: #32250-1 50ul #32250-2 100ul

Orders: order@signalwayantibody.com

Support: tech@signalwayantibody.com

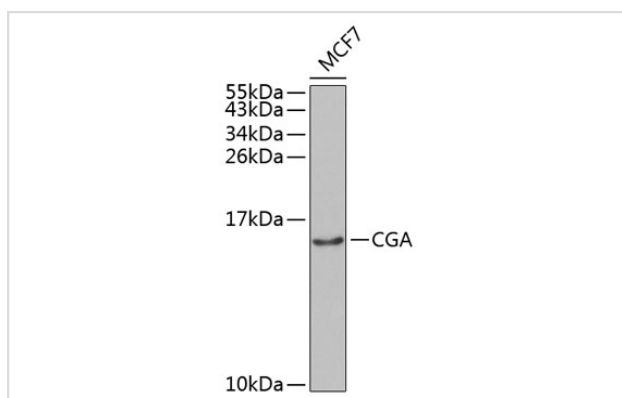
Description

Product Name	CGA Antibody
Host Species	Rabbit
Clonality	Polyclonal
Isotype	IgG
Purification	Affinity purification
Applications	WB
Species Reactivity	Human,Mouse
Specificity	The antibody detects endogenous level of total CGA protein.
Immunogen Type	Recombinant Protein
Immunogen Description	Recombinant fusion protein of human CGA (NP_000726.1).
Target Name	CGA
Other Names	CGA;CG-ALPHA;FSHA;GPHA1;GPHa;HCG;LHA;TSHA
Accession No.	Uniprot:P01215GeneID:1081
Uniprot	P01215
GeneID	1081
SDS-PAGE MW	13kDa
Concentration	1.0mg/ml
Formulation	PBS with 0.02% sodium azide,50% glycerol,pH7.3.
Storage	Store at -20°C. Avoid freeze / thaw cycles.

Application Details

WB □ 1:500 - 1:2000

Images



Western blot analysis of extracts of MCF-7 cells, using CGA antibody.

Background

The four human glycoprotein hormones chorionic gonadotropin (CG), luteinizing hormone (LH), follicle stimulating hormone (FSH), and thyroid stimulating hormone (TSH) are dimers consisting of alpha and beta subunits that are associated noncovalently. The alpha subunits of these hormones are identical, however, their beta chains are unique and confer biological specificity. The protein encoded by this gene is the alpha subunit and belongs to the glycoprotein hormones alpha chain family. Two transcript variants encoding different isoforms have been found for this gene.

Note: This product is for in vitro research use only