

F11R Antibody

Catalog No: #32252

Package Size: #32252-1 50ul #32252-2 100ul

Orders: order@signalwayantibody.com

Support: tech@signalwayantibody.com

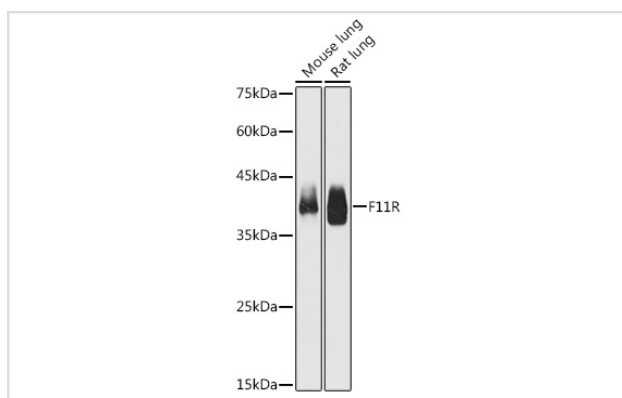
Description

Product Name	F11R Antibody
Host Species	Rabbit
Clonality	Polyclonal
Isotype	IgG
Purification	Affinity purification
Applications	WB,IHC
Species Reactivity	Human,Mouse,Rat
Specificity	The antibody detects endogenous level of total F11R protein.
Immunogen Type	Recombinant Protein
Immunogen Description	Recombinant fusion protein of human F11R (NP_058642.1).
Target Name	F11R
Other Names	F11R;CD321;JAM;JAM1;JAMA;JCAM;KAT;PAM-1
Accession No.	Uniprot:Q9Y624GeneID:50848
Uniprot	Q9Y624
GeneID	50848
SDS-PAGE MW	37KDa
Concentration	1.0mg/ml
Formulation	PBS with 0.02% sodium azide,50% glycerol,pH7.3.
Storage	Store at -20°C. Avoid freeze / thaw cycles.

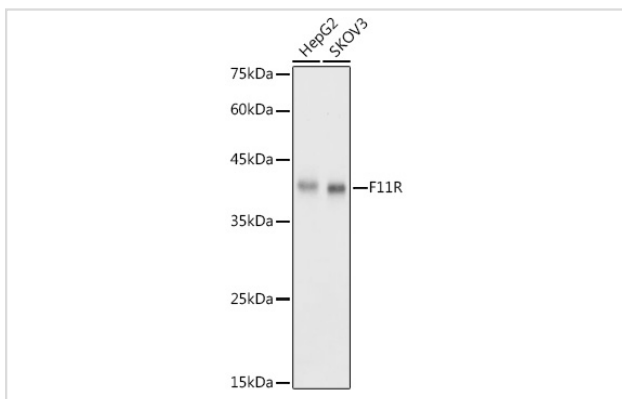
Application Details

WB □ 1:500 - 1:2000 IHC □ 1:50 - 1:200

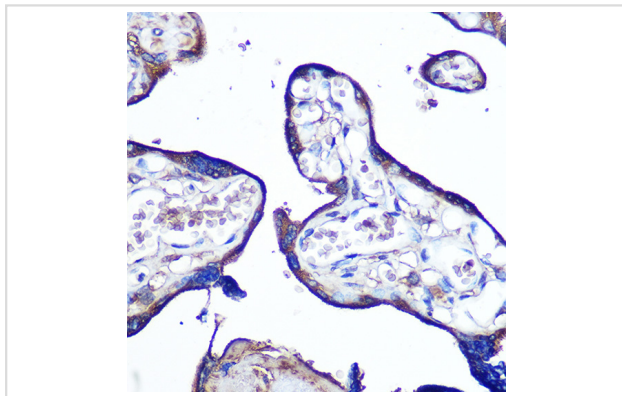
Images



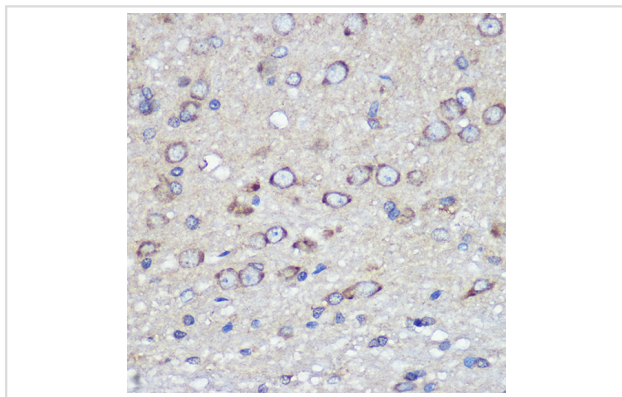
Western blot analysis of extracts of various cell lines, using F11R antibody.



Western blot analysis of extracts of various cell lines, using F11R antibody.



Immunohistochemistry of paraffin-embedded human placenta using F11R Rabbit pAb.



Immunohistochemistry of paraffin-embedded rat brain using F11R Rabbit pAb.

Background

Tight junctions represent one mode of cell-to-cell adhesion in epithelial or endothelial cell sheets, forming continuous seals around cells and serving as a physical barrier to prevent solutes and water from passing freely through the paracellular space. The protein encoded by this immunoglobulin superfamily gene member is an important regulator of tight junction assembly in epithelia. In addition, the encoded protein can act as (1) a receptor for reovirus, (2) a ligand for the integrin LFA1, involved in leukocyte transmigration, and (3) a platelet receptor. Multiple 5' alternatively spliced variants, encoding the same protein, have been identified but their biological validity has not been established.

Note: This product is for in vitro research use only