

NFE2L2 Antibody

Catalog No: #32254

Package Size: #32254-1 50ul #32254-2 100ul

Orders: order@signalwayantibody.comSupport: tech@signalwayantibody.com

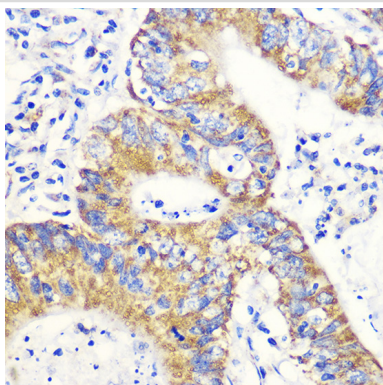
Description

Product Name	NFE2L2 Antibody
Host Species	Rabbit
Clonality	Polyclonal
Isotype	IgG
Purification	Affinity purification
Applications	WB,IHC,IF
Species Reactivity	Human,Mouse,Rat
Specificity	The antibody detects endogenous level of total NFE2L2 protein.
Immunogen Type	Recombinant Protein
Immunogen Description	Recombinant fusion protein of human NRF2 (NP_006155.2).
Target Name	NFE2L2
Other Names	NFE2L2;HEBP1;NRF2
Accession No.	Uniprot:Q16236GeneID:4780
Uniprot	Q16236
GeneID	4780
SDS-PAGE MW	110KDa
Concentration	1.0mg/ml
Formulation	PBS with 0.02% sodium azide,50% glycerol,pH7.3.
Storage	Store at -20°C. Avoid freeze / thaw cycles.

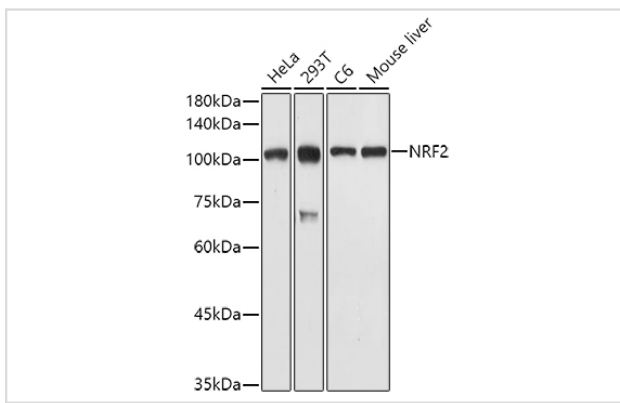
Application Details

WB 1:500 - 1:2000 IHC 1:50 - 1:200 IF 1:50 - 1:200

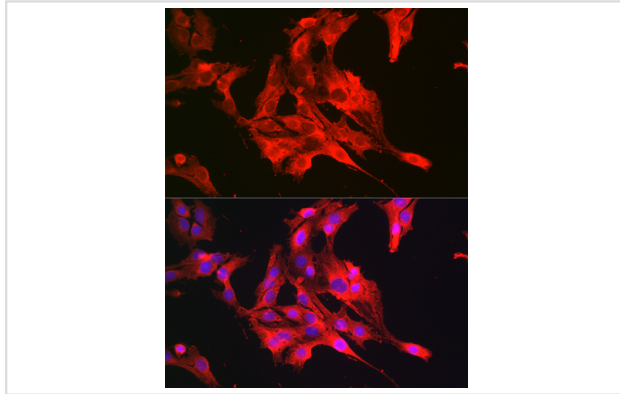
Images



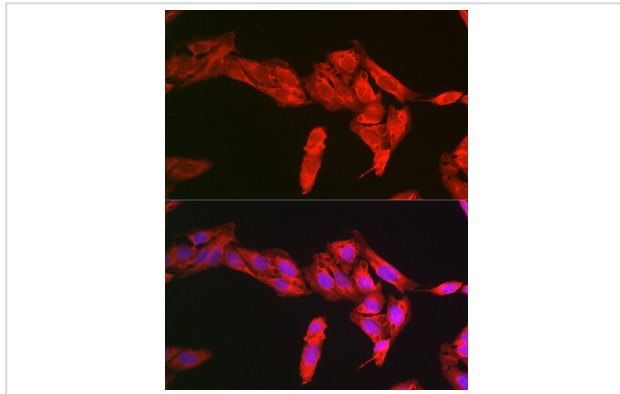
Immunohistochemistry of paraffin-embedded human colon carcinoma using NRF2 antibody.



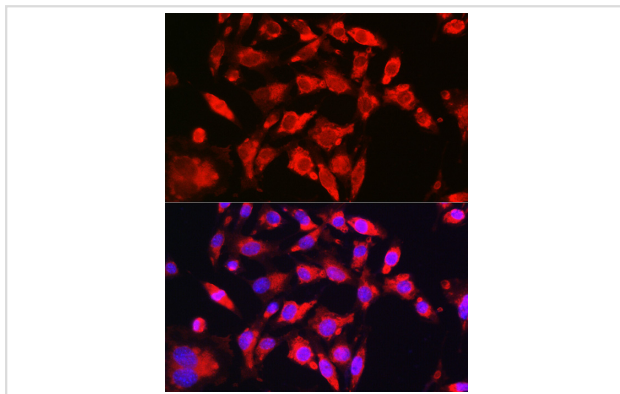
Western blot analysis of extracts of various cell lines, using NRF2 antibody.



Immunofluorescence analysis of C6 cells using NRF2 Rabbit pAb.



Immunofluorescence analysis of U-2 OS cells using NRF2 Rabbit pAb.



Immunofluorescence analysis of BALB-3T3 cells using NRF2 Rabbit pAb.

Background

This gene encodes a transcription factor which is a member of a small family of basic leucine zipper (bZIP) proteins. The encoded transcription factor regulates genes which contain antioxidant response elements (ARE) in their promoters; many of these genes encode proteins involved in response to injury and inflammation which includes the production of free radicals. Multiple transcript variants encoding different isoforms have been characterized for this gene.

Note: This product is for in vitro research use only