

SOD2 Antibody

Catalog No: #32265

Package Size: #32265-1 50ul #32265-2 100ul

Orders: order@signalwayantibody.com

Support: tech@signalwayantibody.com

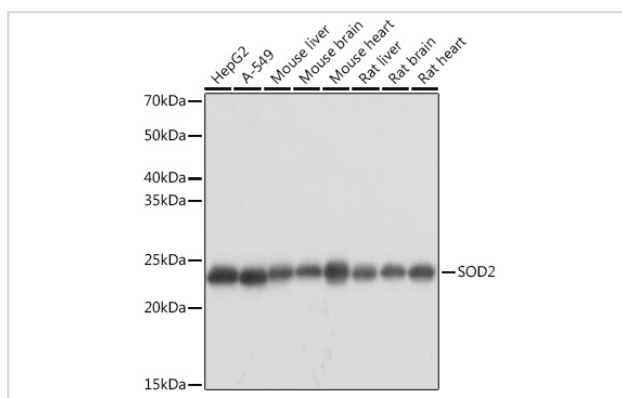
Description

Product Name	SOD2 Antibody
Host Species	Rabbit
Clonality	Polyclonal
Isotype	IgG
Purification	Affinity purification
Applications	WB,IHC,IF
Species Reactivity	Human,Mouse,Rat
Specificity	The antibody detects endogenous level of total SOD2 protein.
Immunogen Type	Recombinant Protein
Immunogen Description	Recombinant fusion protein of human SOD2 (NP_000627.2).
Target Name	SOD2
Other Names	IPO-B;IPOB;MNSOD;MVCD6;Mn-SOD;SOD2
Accession No.	Uniprot:P04179GeneID:6648
Uniprot	P04179
GeneID	6648
SDS-PAGE MW	25KDa/22KDa
Concentration	1.0mg/ml
Formulation	PBS with 0.02% sodium azide,50% glycerol,pH7.3.
Storage	Store at -20°C. Avoid freeze / thaw cycles.

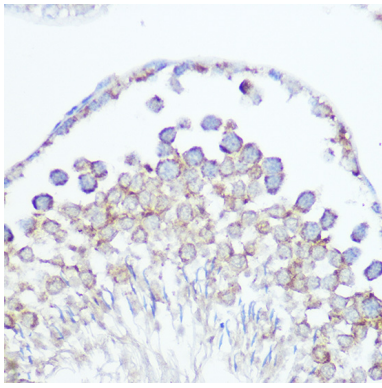
Application Details

WB □ 1:500 - 1:2000 IHC □ 1:50 - 1:200 IF □ 1:50 - 1:200

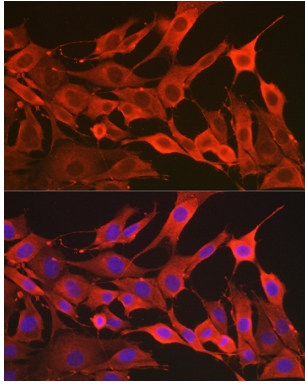
Images



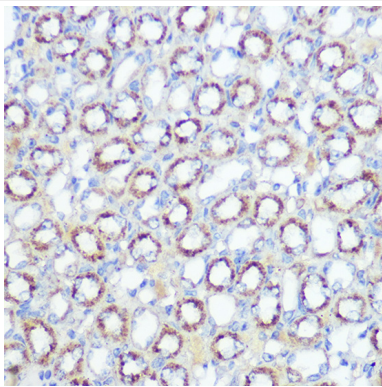
Western blot analysis of extracts of various cell lines, using SOD2 antibody.



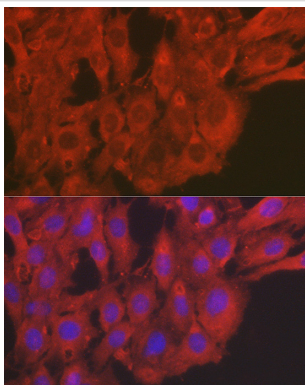
Immunohistochemistry of paraffin-embedded rat testis using SOD2 Rabbit pAb.



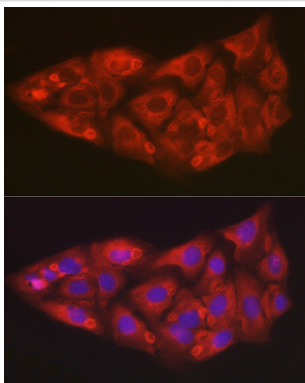
Immunofluorescence analysis of NIH/3T3 cells using [KO Validated] SOD2 Rabbit pAb.



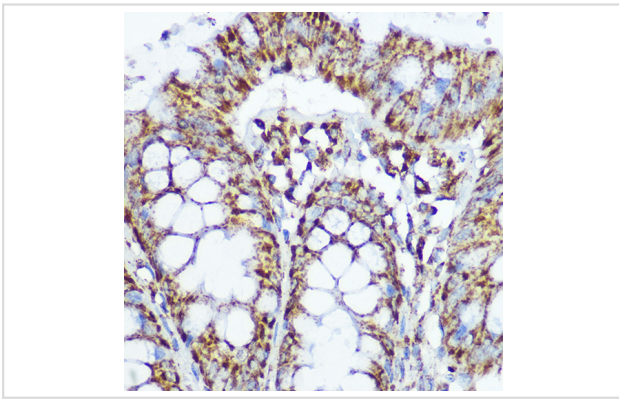
Immunohistochemistry of paraffin-embedded mouse kidney using SOD2 Rabbit pAb.



Immunofluorescence analysis of C6 cells using [KO Validated] SOD2 Rabbit pAb.



Immunofluorescence analysis of U2OS cells using [KO Validated] SOD2 Rabbit pAb.



Immunohistochemistry of paraffin-embedded human colon using SOD2 Rabbit pAb.

Background

This gene is a member of the iron/manganese superoxide dismutase family. It encodes a mitochondrial protein that forms a homotetramer and binds one manganese ion per subunit. This protein binds to the superoxide byproducts of oxidative phosphorylation and converts them to hydrogen peroxide and diatomic oxygen. Mutations in this gene have been associated with idiopathic cardiomyopathy (IDC), premature aging, sporadic motor neuron disease, and cancer. Alternative splicing of this gene results in multiple transcript variants. A related pseudogene has been identified on chromosome 1.

Note: This product is for in vitro research use only