

CD44 Antibody

Catalog No: #32267

Package Size: #32267-1 50ul #32267-2 100ul

Orders: order@signalwayantibody.com

Support: tech@signalwayantibody.com

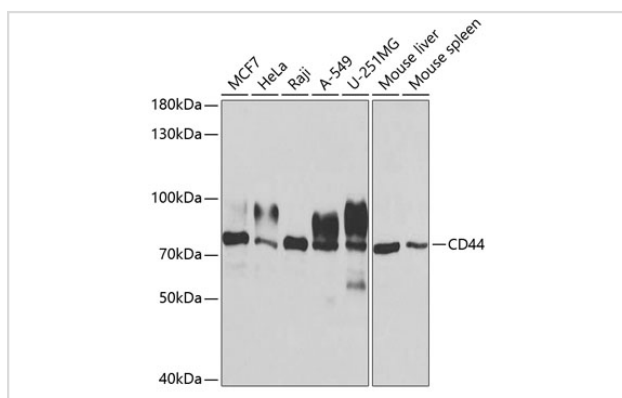
Description

Product Name	CD44 Antibody
Host Species	Rabbit
Clonality	Polyclonal
Purification	Antibodies were purified by affinity purification using immunogen.
Applications	WB,IHC
Species Reactivity	Human,Mouse
Specificity	The antibody detects endogenous level of total CD44 protein.
Immunogen Type	Peptide
Immunogen Description	A synthetic peptide of human CD44.
Target Name	CD44
Other Names	CD44; CDW44; CSPG8; ECMR-III; HCELL
Accession No.	Swiss-Prot:P16070NCBI Gene ID:960
Uniprot	P16070
GeneID	960;
SDS-PAGE MW	82KD
Concentration	1.0mg/ml
Formulation	Supplied at 1.0mg/mL in phosphate buffered saline (without Mg ²⁺ and Ca ²⁺), pH 7.4, 150mM NaCl, 0.02% sodium azide and 50% glycerol.
Storage	Store at -20°C

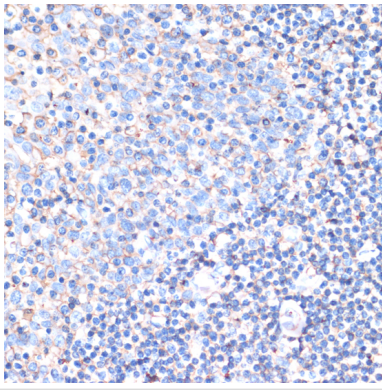
Application Details

WB □ 1:500 - 1:2000 IHC □ 1:50 - 1:200

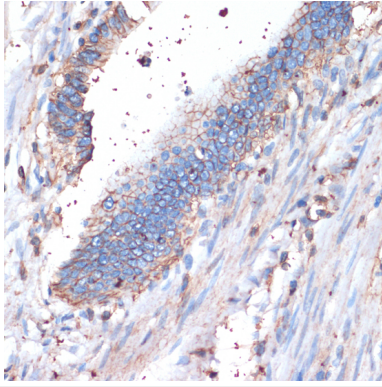
Images



Western blot analysis of extracts of various cell lines, using CD44 at 1:1000 dilution.



Immunohistochemistry of paraffin-embedded human tonsil using CD44 at dilution of 1:200 (40x lens).



Immunohistochemistry of paraffin-embedded human colon carcinoma using CD44 at dilution of 1:200 (40x lens).

Background

CD44 is a type I transmembrane glycoprotein that mediates cell-cell and cell-matrix interaction through its affinity for hyaluronic acid (HA) and possibly through other parts of the extracellular matrix (ECM). CD44 is highly polymorphic, possesses a number of alternative splice variants and undergoes extensive post-translational modifications (1,2). Increased surface levels of CD44 are characteristic of T cell activation, and expression of the protein is upregulated during the inflammatory response. Interactions between CD44 and HER2 have been linked to an increase in ovarian carcinoma cell growth (1-3). CD44 interacts with ezrin, radixin and moesin (ERM), linking the actin cytoskeleton to the plasma membrane and the ECM (4-6). CD44 is constitutively phosphorylated at Ser325 in resting cells. Activation of PKC results in phosphorylation of Ser291, dephosphorylation of Ser325, disassociation of ezrin from CD44, and directional motility (4).

Note: This product is for in vitro research use only