

CBS Antibody

Catalog No: #32276

Package Size: #32276-1 50ul #32276-2 100ul

Orders: order@signalwayantibody.comSupport: tech@signalwayantibody.com

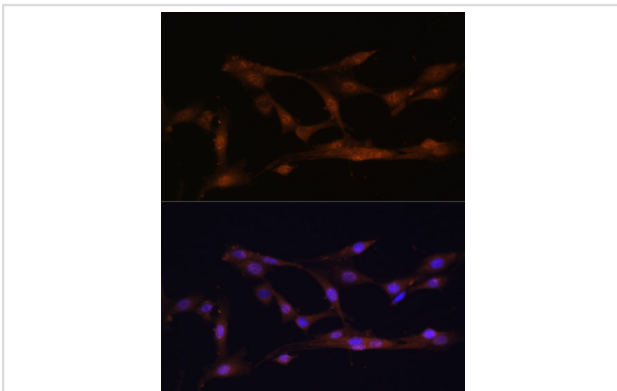
Description

Product Name	CBS Antibody
Host Species	Rabbit
Clonality	Polyclonal
Purification	Antibodies were purified by affinity purification using immunogen.
Applications	WB,IF
Species Reactivity	Human,Mouse,Rat
Specificity	The antibody detects endogenous level of total CBS protein.
Immunogen Type	Recombinant Protein
Immunogen Description	Recombinant protein of human CBS.
Target Name	CBS
Other Names	HIP4; CBS;
Accession No.	Swiss-Prot:P35520NCBI Gene ID:875
Uniprot	P35520
GeneID	102724560;875;
SDS-PAGE MW	61KD
Concentration	1.0mg/ml
Formulation	Supplied at 1.0mg/mL in phosphate buffered saline (without Mg ²⁺ and Ca ²⁺), pH 7.4, 150mM NaCl, 0.02% sodium azide and 50% glycerol.
Storage	Store at -20°C

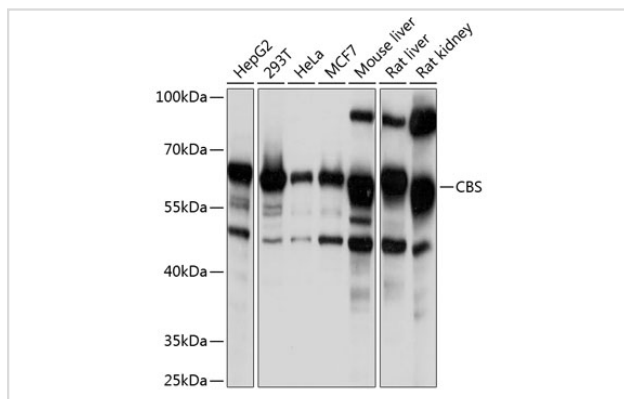
Application Details

WB □ 1:500 - 1:2000IF □ 1:50 - 1:200

Images



Immunofluorescence analysis of C6 cells using CBS at dilution of 1:100. Blue: DAPI for nuclear staining.



Western blot analysis of extracts of various cell lines, using CBS Polyclonal at 1:1000 dilution.

Background

The CBS gene encodes cystathionine beta-synthase, which catalyzes the first irreversible step of transsulfuration. The CBS enzyme is a homotetramer of 63-kD subunits and requires pyridoxal phosphate and heme for activity(PMID:11230183). CBS protein is localized in most areas of the brain, but predominantly in the cell bodies and neuronal processes of Purkinje cells and Ammon's horn neurons(PMID:12588964). This antibody is specific to CBS.

Note: This product is for in vitro research use only