

CES2 Antibody

Catalog No: #32291

Package Size: #32291-1 50ul #32291-2 100ul

Orders: order@signalwayantibody.comSupport: tech@signalwayantibody.com

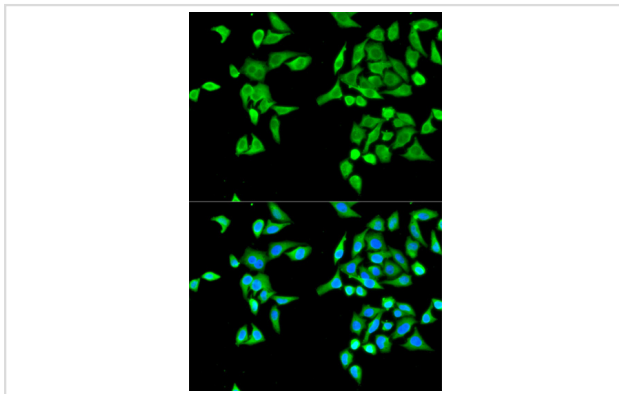
Description

Product Name	CES2 Antibody
Host Species	Rabbit
Clonality	Polyclonal
Isotype	IgG
Purification	Affinity purification
Applications	WB,IF
Species Reactivity	Human,Mouse
Specificity	The antibody detects endogenous level of total CES2 protein.
Immunogen Type	Peptide
Immunogen Description	A synthetic peptide of human CES2 (NP_003860.3).
Target Name	CES2
Other Names	CES2;CE-2;CES2A1;PCE-2;iCE
Accession No.	Uniprot:O00748GeneID:8824
Uniprot	O00748
GeneID	8824
SDS-PAGE MW	67kDa
Concentration	1.0mg/ml
Formulation	PBS with 0.02% sodium azide,50% glycerol,pH7.3.
Storage	Store at -20°C. Avoid freeze / thaw cycles.

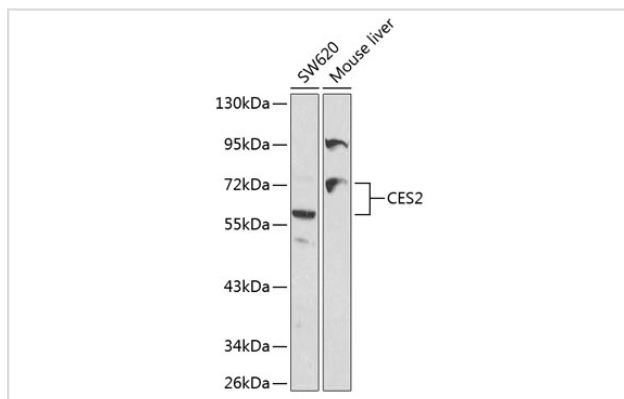
Application Details

WB \square 1:500 - 1:2000 IF \square 1:50 - 1:200

Images



Immunofluorescence analysis of MCF-7 cells using CES2 antibody.



Western blot analysis of extracts of various cell lines, using CES2 antibody.

Background

This gene encodes a member of the carboxylesterase large family. The family members are responsible for the hydrolysis or transesterification of various xenobiotics, such as cocaine and heroin, and endogenous substrates with ester, thioester, or amide bonds. They may participate in fatty acyl and cholesterol ester metabolism, and may play a role in the blood-brain barrier system. The protein encoded by this gene is the major intestinal enzyme and functions in intestine drug clearance. Alternatively spliced transcript variants have been found for this gene.

Note: This product is for in vitro research use only