

COL5A1 Antibody

Catalog No: #32292

Package Size: #32292-1 50ul #32292-2 100ul

Orders: order@signalwayantibody.com

Support: tech@signalwayantibody.com

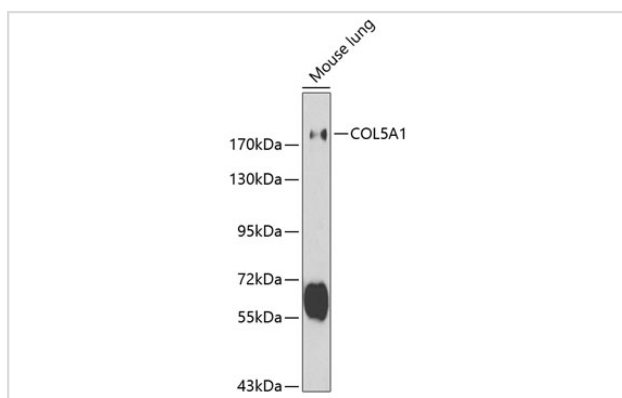
Description

Product Name	COL5A1 Antibody
Host Species	Rabbit
Clonality	Polyclonal
Purification	Antibodies were purified by affinity purification using immunogen.
Applications	WB
Species Reactivity	Mouse
Specificity	The antibody detects endogenous level of total COL5A1 protein.
Immunogen Type	Peptide
Immunogen Description	A synthetic peptide of human COL5A1.
Target Name	COL5A1
Other Names	COL5A1; collagen,typeV,alpha1; collagenalpha-1(V)chain;
Accession No.	Swiss-Prot:P20908NCBI Gene ID:1289
Uniprot	P20908
GeneID	1289;
SDS-PAGE MW	184KD
Concentration	1.0mg/ml
Formulation	Supplied at 1.0mg/mL in phosphate buffered saline (without Mg ²⁺ and Ca ²⁺), pH 7.4, 150mM NaCl, 0.02% sodium azide and 50% glycerol.
Storage	Store at -20°C

Application Details

WB □ 1:500 - 1:2000

Images



Western blot analysis of extracts of mouse lung, using COL5A1 at 1:500 dilution.

Background

The extensive family of COL gene products (collagens) is composed of several chain types, including fibril-forming interstitial collagens (types I, II, III and V) and basement membrane collagens (type IV), each type containing multiple isoforms. Collagens are fibrous, extracellular matrix proteins with high tensile strength and are the major components of connective tissue, such as tendons and cartilage. All collagens contain a triple helix domain and frequently show lateral self-association in order to form complex connective tissues. Several collagens also play a role in cell adhesion, important for maintaining normal tissue architecture and function.

Note: This product is for in vitro research use only