

TIMP2 Antibody

Catalog No: #32307

Package Size: #32307-1 50ul #32307-2 100ul

Orders: order@signalwayantibody.comSupport: tech@signalwayantibody.com

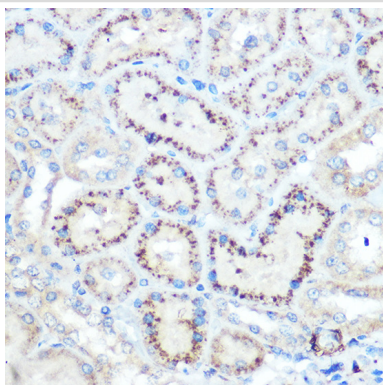
Description

Product Name	TIMP2 Antibody
Host Species	Rabbit
Clonality	Polyclonal
Isotype	IgG
Purification	Affinity purification
Applications	WB,IHC,IF
Species Reactivity	Human,Mouse,Rat
Specificity	The antibody detects endogenous level of total TIMP2 protein.
Immunogen Type	Recombinant Protein
Immunogen Description	A synthetic peptide of human TIMP2 (NP_003246.1).
Target Name	TIMP2
Other Names	TIMP2;CSC-21K;DDC8
Accession No.	Uniprot:P16035GenelD:7077
Uniprot	P16035
GenelD	7077
SDS-PAGE MW	24KDa
Concentration	1.0mg/ml
Formulation	PBS with 0.02% sodium azide,50% glycerol,pH7.3.
Storage	Store at -20°C. Avoid freeze / thaw cycles.

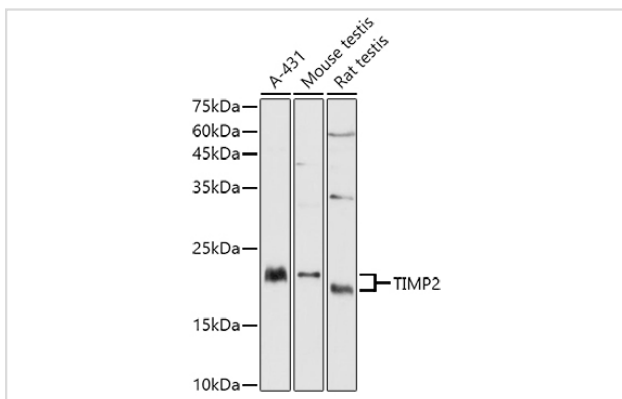
Application Details

WB □ 1:500 - 1:2000 IHC □ 1:50 - 1:200 IF □ 1:50 - 1:200

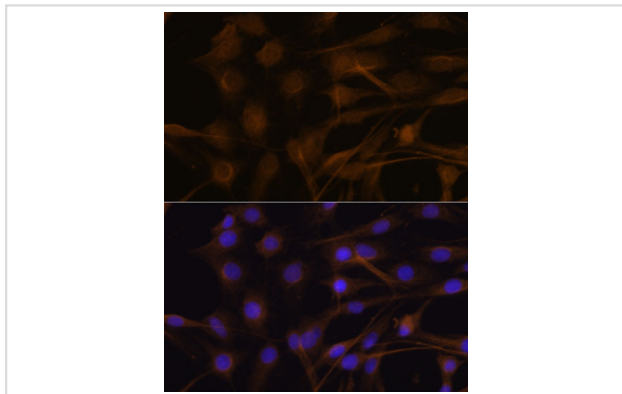
Images



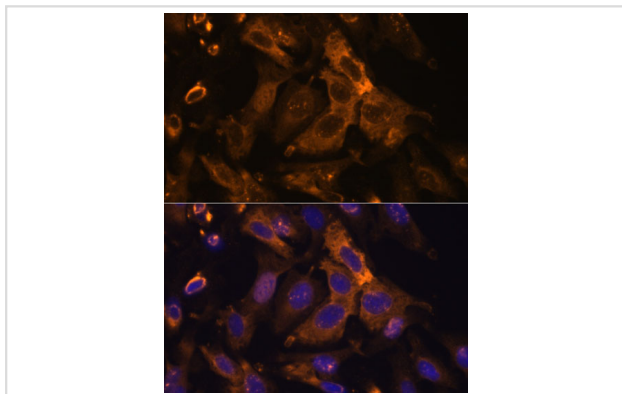
Immunohistochemistry of paraffin-embedded rat kidney using TIMP2 Rabbit pAb.



Western blot analysis of extracts of various cell lines, using TIMP2 antibody.



Immunofluorescence analysis of C6 cells using TIMP2 antibody.



Immunofluorescence analysis of U-2 OS cells using TIMP2 antibody.

Background

This gene is a member of the TIMP gene family. The proteins encoded by this gene family are natural inhibitors of the matrix metalloproteinases, a group of peptidases involved in degradation of the extracellular matrix. In addition to an inhibitory role against metalloproteinases, the encoded protein has a unique role among TIMP family members in its ability to directly suppress the proliferation of endothelial cells. As a result, the encoded protein may be critical to the maintenance of tissue homeostasis by suppressing the proliferation of quiescent tissues in response to angiogenic factors, and by inhibiting protease activity in tissues undergoing remodelling of the extracellular matrix.

Note: This product is for in vitro research use only