

B2M Antibody

Catalog No: #32309

Package Size: #32309-1 50ul #32309-2 100ul

Orders: order@signalwayantibody.comSupport: tech@signalwayantibody.com

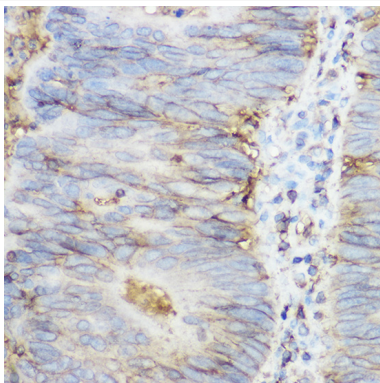
Description

| | |
|-----------------------|---|
| Product Name | B2M Antibody |
| Host Species | Rabbit |
| Clonality | Polyclonal |
| Isotype | IgG |
| Purification | Affinity purification |
| Applications | WB,IHC |
| Species Reactivity | Human,Mouse,Rat |
| Specificity | The antibody detects endogenous level of total B2M protein. |
| Immunogen Type | Recombinant Protein |
| Immunogen Description | Recombinant fusion protein of human beta 2 Microglobulin (NP_004039.1). |
| Target Name | B2M |
| Other Names | B2M;IMD43 |
| Accession No. | Uniprot:P61769GeneID:567 |
| Uniprot | P61769 |
| GeneID | 567 |
| SDS-PAGE MW | 12kDa |
| Concentration | 1.0mg/ml |
| Formulation | PBS with 0.02% sodium azide,50% glycerol,pH7.3. |
| Storage | Store at -20°C. Avoid freeze / thaw cycles. |

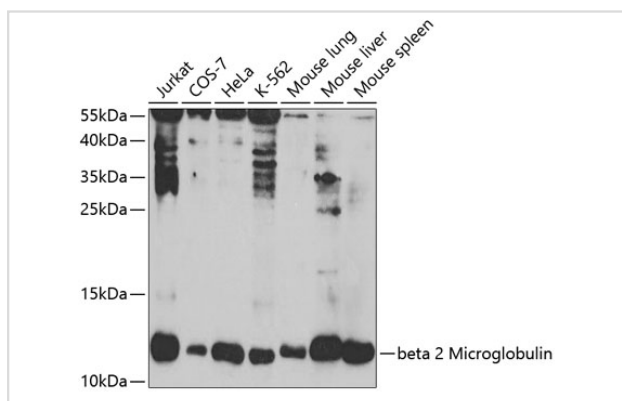
Application Details

WB □ 1:500 - 1:2000 IHC □ 1:50 - 1:200

Images



Immunohistochemistry of paraffin-embedded human colon carcinoma using beta 2 Microglobulin Rabbit pAb.



Western blot analysis of extracts of various cell lines, using beta 2 Microglobulin antibody.

Background

This gene encodes a serum protein found in association with the major histocompatibility complex (MHC) class I heavy chain on the surface of nearly all nucleated cells. The protein has a predominantly beta-pleated sheet structure that can form amyloid fibrils in some pathological conditions. The encoded antimicrobial protein displays antibacterial activity in amniotic fluid. A mutation in this gene has been shown to result in hypercatabolic hypoproteinemia.

Note: This product is for in vitro research use only