

## BSG Antibody

Catalog No: #32312

Package Size: #32312-1 50ul #32312-2 100ul

Orders: [order@signalwayantibody.com](mailto:order@signalwayantibody.com)Support: [tech@signalwayantibody.com](mailto:tech@signalwayantibody.com)

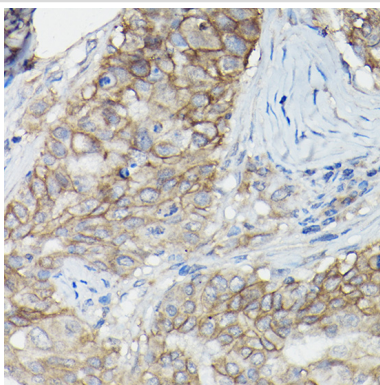
## Description

Product Name	BSG Antibody
Host Species	Rabbit
Clonality	Polyclonal
Isotype	IgG
Purification	Affinity purification
Applications	WB,IHC
Species Reactivity	Human,Mouse,Rat
Specificity	The antibody detects endogenous level of total BSG protein.
Immunogen Type	Recombinant Protein
Immunogen Description	Recombinant fusion protein of human CD147/CD147/BSG (NP_940991.1).
Target Name	BSG
Other Names	BSG;5F7;CD147;EMMPRIN;OK;TCSF;basigin
Accession No.	Uniprot:P35613GeneID:682
Uniprot	P35613
GeneID	682
SDS-PAGE MW	38-65KDa
Concentration	1.0mg/ml
Formulation	PBS with 0.02% sodium azide,50% glycerol,pH7.3.
Storage	Store at -20°C. Avoid freeze / thaw cycles.

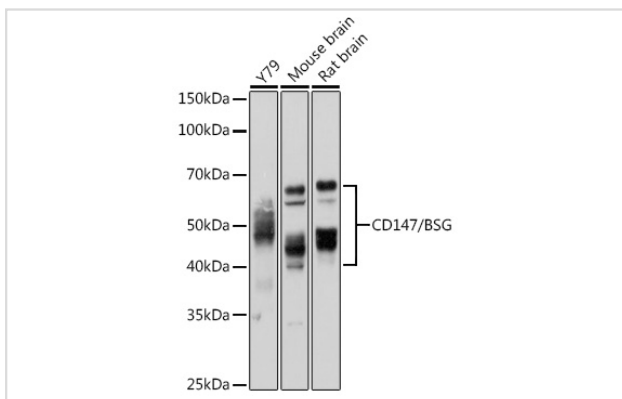
## Application Details

WB □ 1:500 - 1:2000 IHC □ 1:50 - 1:200

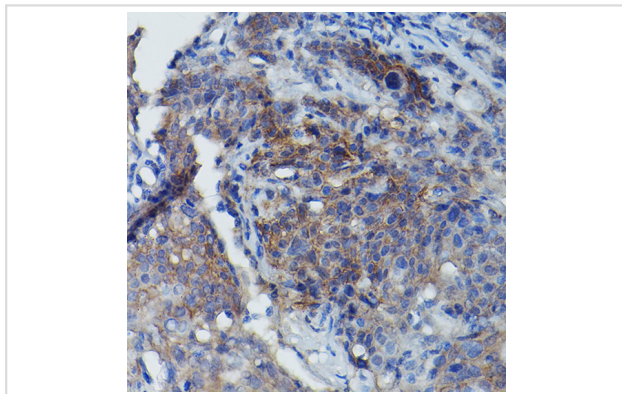
## Images



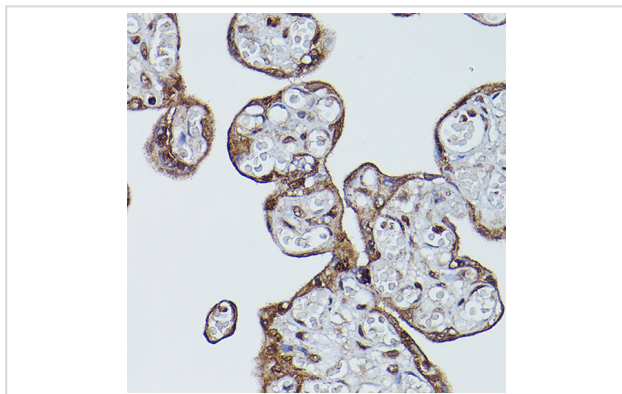
Immunohistochemistry of paraffin-embedded human breast cancer using CD147/CD147/BSG Rabbit pAb.



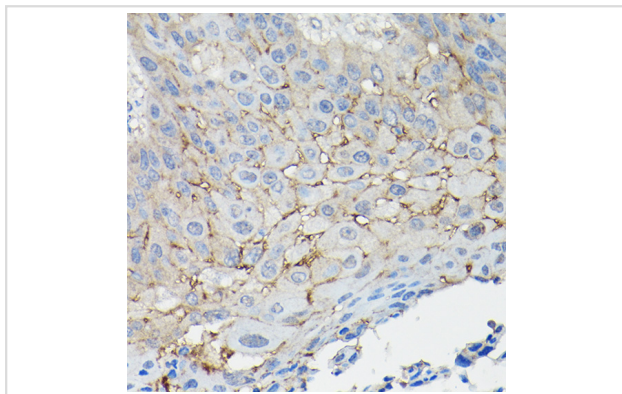
Western blot analysis of extracts of various cell lines, using CD147/CD147/BSG antibody.



Immunohistochemistry of paraffin-embedded human cervix cancer using BSG Rabbit pAb.



Immunohistochemistry of paraffin-embedded human placenta using BSG Rabbit pAb.



Immunohistochemistry of paraffin-embedded human esophageal cancer using CD147/CD147/BSG Rabbit pAb.

## Background

The protein encoded by this gene is a plasma membrane protein that is important in spermatogenesis, embryo implantation, neural network formation, and tumor progression. The encoded protein is also a member of the immunoglobulin superfamily. Multiple transcript variants encoding different isoforms have been found for this gene.

---

Note: This product is for in vitro research use only