

SIN3A Antibody

Catalog No: #32322

Package Size: #32322-1 50ul #32322-2 100ul

Orders: order@signalwayantibody.com

Support: tech@signalwayantibody.com

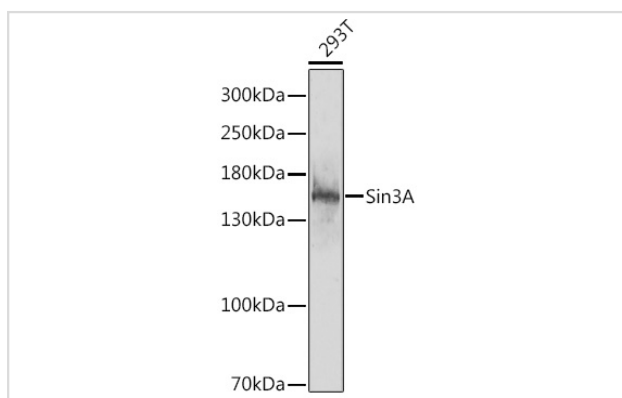
Description

Product Name	SIN3A Antibody
Host Species	Rabbit
Clonality	Polyclonal
Isotype	IgG
Purification	Affinity purification
Applications	WB
Species Reactivity	Human,Rat
Specificity	The antibody detects endogenous level of total SIN3A protein.
Immunogen Type	Recombinant Protein
Immunogen Description	Recombinant fusion protein of human Sin3A (NP_056292.1).
Target Name	SIN3A
Other Names	SIN3A;WITKOS
Accession No.	Uniprot:Q96ST3GeneID:25942
Uniprot	Q96ST3
GeneID	25942
SDS-PAGE MW	147kDa
Concentration	1.0mg/ml
Formulation	PBS with 0.02% sodium azide,50% glycerol,pH7.3.
Storage	Store at -20°C. Avoid freeze / thaw cycles.

Application Details

WB 1:500 - 1:2000

Images



Western blot analysis of extracts of 293T cells, using Sin3A antibody.

Background

The protein encoded by this gene is a transcriptional regulatory protein. It contains paired amphipathic helix (PAH) domains, which are important for protein-protein interactions and may mediate repression by the Mad-Max complex.

Note: This product is for in vitro research use only