

HLA-DRA Antibody

Catalog No: #32324

Package Size: #32324-1 50ul #32324-2 100ul

Orders: order@signalwayantibody.comSupport: tech@signalwayantibody.com

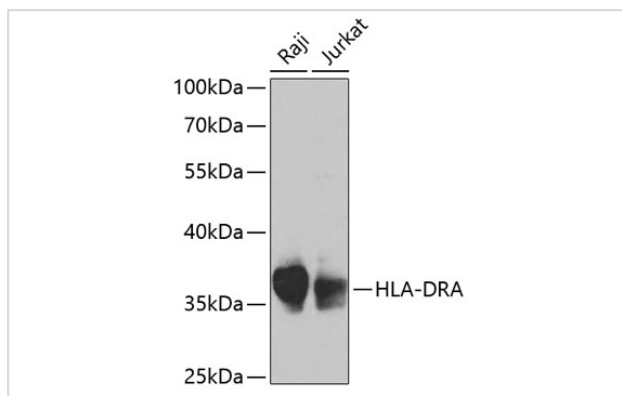
Description

Product Name	HLA-DRA Antibody
Host Species	Rabbit
Clonality	Polyclonal
Isotype	IgG
Purification	Affinity purification
Applications	WB
Species Reactivity	Human,Mouse,Rat
Specificity	The antibody detects endogenous level of total HLA-DRA protein.
Immunogen Type	Recombinant Protein
Immunogen Description	Recombinant fusion protein of human HLA-DRA (NP_061984.2).
Target Name	HLA-DRA
Other Names	HLA-DRA;HLA-DRA1;major histocompatibility complex;class II;DR alpha
Accession No.	Uniprot:P01903GeneID:3122
Uniprot	P01903
GeneID	3122
SDS-PAGE MW	37kDa
Concentration	1.0mg/ml
Formulation	PBS with 0.02% sodium azide,50% glycerol,pH7.3.
Storage	Store at -20°C. Avoid freeze / thaw cycles.

Application Details

WB 1:500 - 1:2000

Images



Western blot analysis of extracts of various cell lines, using HLA-DRA antibody.

Background

HLA-DRA is one of the HLA class II alpha chain paralogues. This class II molecule is a heterodimer consisting of an alpha and a beta chain, both anchored in the membrane. It plays a central role in the immune system by presenting peptides derived from extracellular proteins. Class II molecules are expressed in antigen presenting cells (APC: B lymphocytes, dendritic cells, macrophages). The alpha chain is approximately 33-35 kDa and its gene contains 5 exons. Exon 1 encodes the leader peptide, exons 2 and 3 encode the two extracellular domains, and exon 4 encodes the transmembrane domain and the cytoplasmic tail. DRA does not have polymorphisms in the peptide binding part and acts as the sole alpha chain for DRB1, DRB3, DRB4 and DRB5.

Note: This product is for in vitro research use only