

SELL Antibody

Catalog No: #32348

Package Size: #32348-1 50ul #32348-2 100ul

Orders: order@signalwayantibody.com

Support: tech@signalwayantibody.com

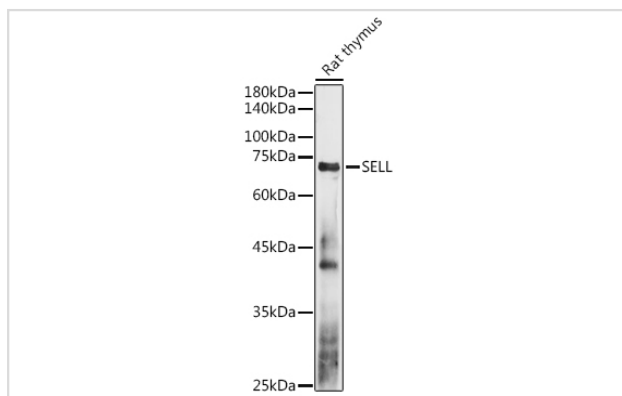
Description

Product Name	SELL Antibody
Host Species	Rabbit
Clonality	Polyclonal
Isotype	IgG
Purification	Affinity purification
Applications	WB,IHC
Species Reactivity	Human,Mouse,Rat
Specificity	The antibody detects endogenous level of total SELL protein.
Immunogen Type	Recombinant Protein
Immunogen Description	A synthetic peptide of human SELL (NP_000646.2).
Target Name	SELL
Other Names	SELL;CD62L;LAM1;LECAM1;LEU8;LNHR;LSEL;LYAM1;PLNHR;TQ1
Accession No.	Uniprot:P14151GeneID:6402
Uniprot	P14151
GeneID	6402
SDS-PAGE MW	75KDa
Concentration	1.0mg/ml
Formulation	PBS with 0.02% sodium azide,50% glycerol,pH7.3.
Storage	Store at -20°C. Avoid freeze / thaw cycles.

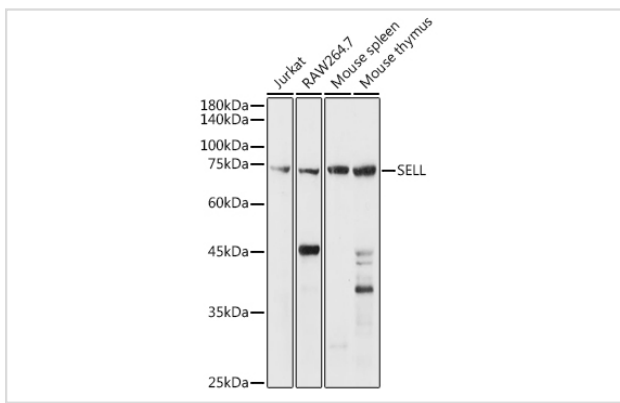
Application Details

WB □ 1:500 - 1:2000 IHC □ 1:50 - 1:200

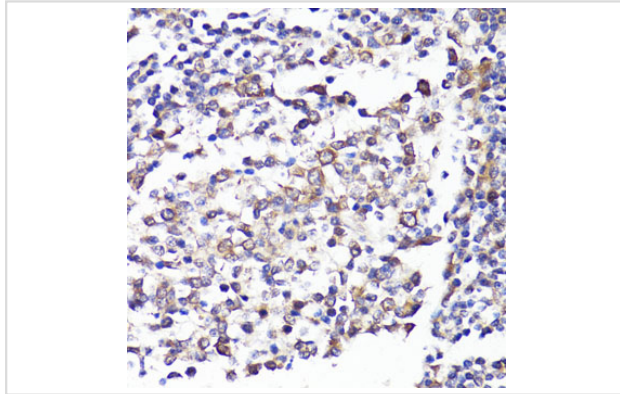
Images



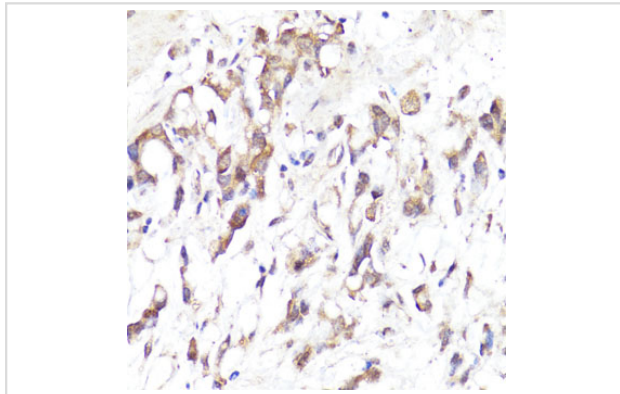
Western blot analysis of extracts of Rat thymus, using SELL antibody.



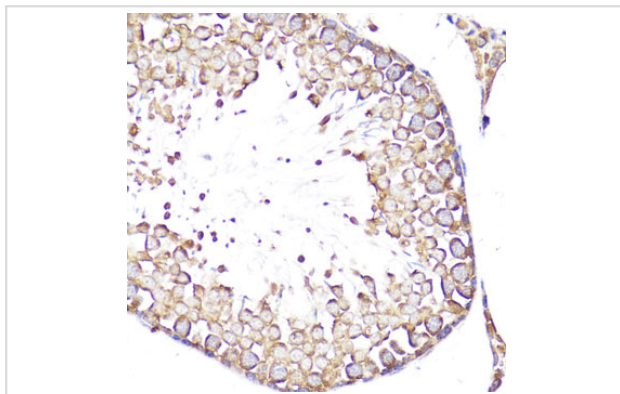
Western blot analysis of extracts of various cell lines, using SELL antibody.



Immunohistochemistry of paraffin-embedded human tonsil using SELL antibody.



Immunohistochemistry of paraffin-embedded human gastric cancer using SELL antibody.



Immunohistochemistry of paraffin-embedded rat testis using SELL antibody.

Background

This gene encodes a cell surface adhesion molecule that belongs to a family of adhesion/homing receptors. The encoded protein contains a C-type lectin-like domain, a calcium-binding epidermal growth factor-like domain, and two short complement-like repeats. The gene product is required for binding and subsequent rolling of leucocytes on endothelial cells, facilitating their migration into secondary lymphoid organs and inflammation sites. Single-nucleotide polymorphisms in this gene have been associated with various diseases including immunoglobulin A nephropathy. Alternatively spliced transcript variants have been found for this gene.

Note: This product is for in vitro research use only