

## RFC1 Antibody

Catalog No: #32351

Package Size: #32351-1 50ul #32351-2 100ul

Orders: order@signalwayantibody.com

Support: tech@signalwayantibody.com

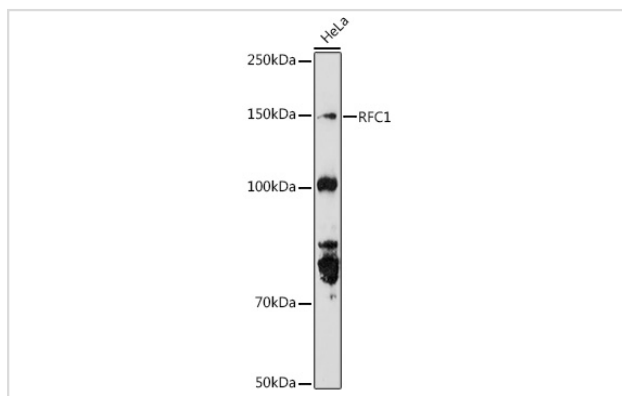
## Description

Product Name	RFC1 Antibody
Host Species	Rabbit
Clonality	Polyclonal
Isotype	IgG
Purification	Affinity purification
Applications	WB,IF
Species Reactivity	Human,Mouse,Rat
Specificity	The antibody detects endogenous level of total RFC1 protein.
Immunogen Type	Recombinant Protein
Immunogen Description	Recombinant fusion protein of human RFC1 (NP_001191676.1).
Target Name	RFC1
Other Names	RFC1;A1;MHC BFB;PO-GA;RECC1;RFC;RFC140
Accession No.	Uniprot:P35251GenID:5981
Uniprot	P35251
GenID	5981
SDS-PAGE MW	140KDa
Concentration	1.0mg/ml
Formulation	PBS with 0.02% sodium azide,50% glycerol,pH7.3.
Storage	Store at -20°C. Avoid freeze / thaw cycles.

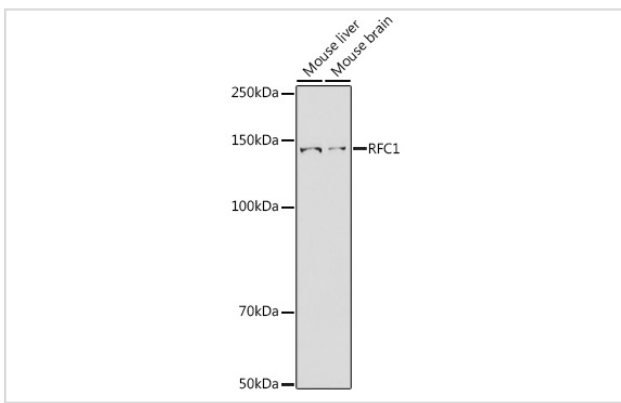
## Application Details

WB □ 1:500 - 1:2000 IF □ 1:50 - 1:200

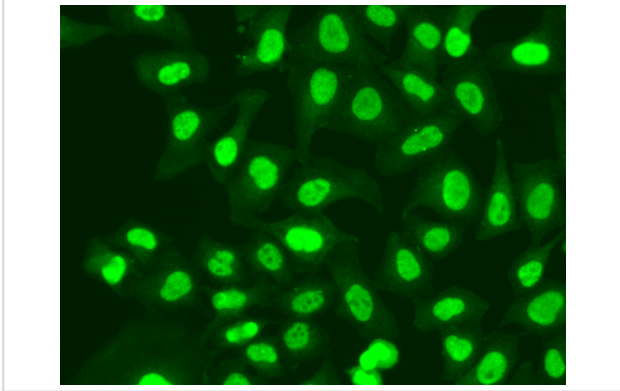
## Images



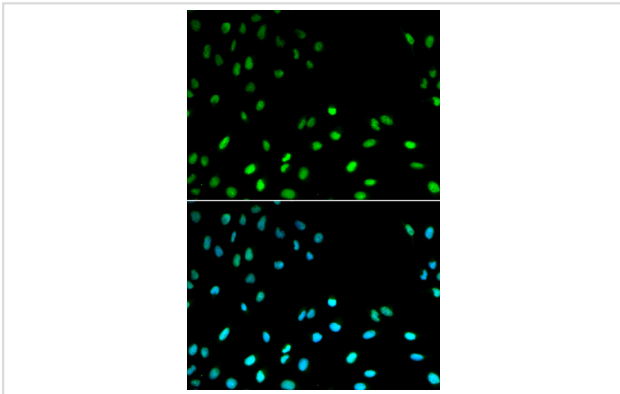
Western blot analysis of extracts of HeLa cells, using RFC1 antibody.



Western blot analysis of extracts of various cell lines, using RFC1 antibody.



Immunofluorescence analysis of A549 cells using RFC1 antibody.



Immunofluorescence analysis of MCF-7 cells using RFC1 antibody.

## Background

This gene encodes the large subunit of replication factor C, a five subunit DNA polymerase accessory protein, which is a DNA-dependent ATPase required for eukaryotic DNA replication and repair. The large subunit acts as an activator of DNA polymerases, binds to the 3' end of primers, and promotes coordinated synthesis of both strands. It may also have a role in telomere stability. Alternatively spliced transcript variants encoding different isoforms have been noted for this gene.

Note: This product is for in vitro research use only