

ETV6 Antibody

Catalog No: #32358

Package Size: #32358-1 50ul #32358-2 100ul

Orders: order@signalwayantibody.com

Support: tech@signalwayantibody.com

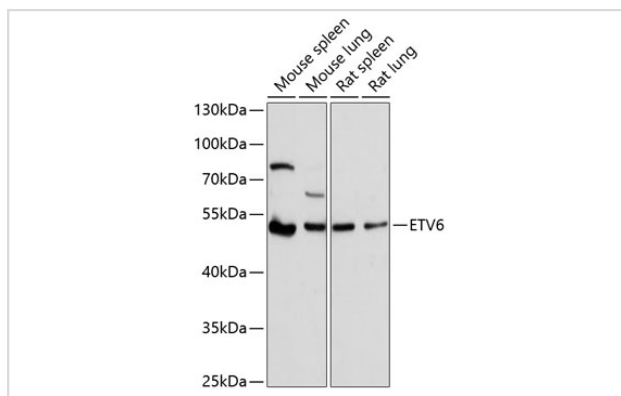
Description

Product Name	ETV6 Antibody
Host Species	Rabbit
Clonality	Polyclonal
Purification	Antibodies were purified by affinity purification using immunogen.
Applications	WB,IHC
Species Reactivity	Human,Mouse,Rat
Specificity	The antibody detects endogenous level of total ETV6 protein.
Immunogen Type	Recombinant Protein
Immunogen Description	Recombinant protein of human ETV6.
Target Name	ETV6
Other Names	TEL; TEL/ABL;
Accession No.	Swiss-Prot:P41212NCBI Gene ID:2120
Uniprot	P41212
GeneID	2120;
SDS-PAGE MW	53KD
Concentration	1.0mg/ml
Formulation	Supplied at 1.0mg/mL in phosphate buffered saline (without Mg ²⁺ and Ca ²⁺), pH 7.4, 150mM NaCl, 0.02% sodium azide and 50% glycerol.
Storage	Store at -20°C

Application Details

WB □ 1:500 - 1:2000 IHC □ 1:50 - 1:200 IP □ 1:50 - 1:100

Images



Western blot analysis of extracts of various cell lines, using ETV6 at 1:1000 dilution.

Background

This gene encodes an ETS family transcription factor. The product of this gene contains two functional domains: a N-terminal pointed (PNT) domain that is involved in protein-protein interactions with itself and other proteins, and a C-terminal DNA-binding domain. Gene knockout studies in mice suggest that it is required for hematopoiesis and maintenance of the developing vascular network. This gene is known to be involved in a large number of chromosomal rearrangements associated with leukemia and congenital fibrosarcoma.

Note: This product is for in vitro research use only