

BTRC Antibody

Catalog No: #32369

Package Size: #32369-1 50ul #32369-2 100ul

Orders: order@signalwayantibody.comSupport: tech@signalwayantibody.com

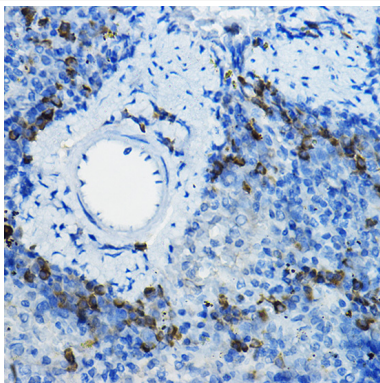
Description

Product Name	BTRC Antibody
Host Species	Rabbit
Clonality	Polyclonal
Isotype	IgG
Purification	Affinity purification
Applications	WB,IHC,IF
Species Reactivity	Human,Mouse,Rat
Specificity	The antibody detects endogenous level of total BTRC protein.
Immunogen Type	Recombinant Protein
Immunogen Description	Recombinant fusion protein of human α TrCP/BTRC (NP_378663.1).
Target Name	BTRC
Other Names	BTRC;BETA-TRCP;FBW1A;FBXW1;FBXW1A;FWD1;bTrCP;bTrCP1;betaTrCP;Beta-TRCP
Accession No.	Uniprot:Q9Y297GeneID:8945
Uniprot	Q9Y297
GeneID	8945
SDS-PAGE MW	65KDa
Concentration	1.0mg/ml
Formulation	PBS with 0.02% sodium azide,50% glycerol,pH7.3.
Storage	Store at -20°C. Avoid freeze / thaw cycles.

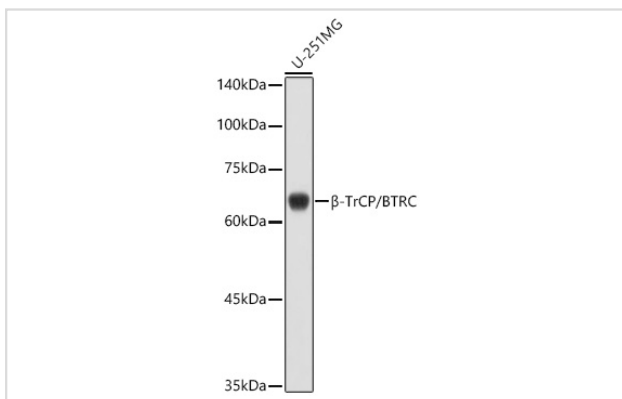
Application Details

WB 1:500 - 1:2000 IHC 1:50 - 1:200 IF 1:50 - 1:100

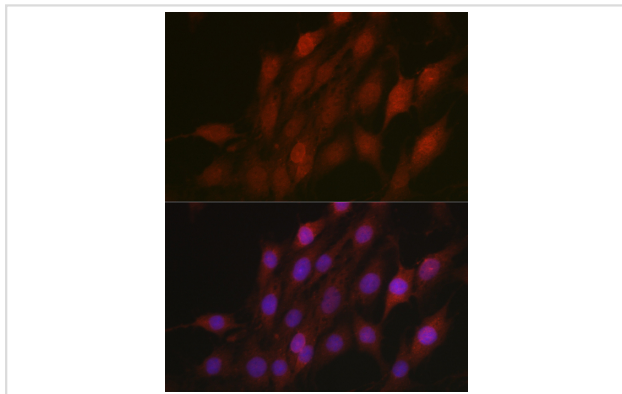
Images



Immunohistochemistry of paraffin-embedded mouse spleen using α TrCP/BTRC Rabbit pAb.



Western blot analysis of extracts of U-251MG cells, using α -TrCP/BTRC antibody.



Immunofluorescence analysis of C6 cells using α -TrCP/BTRC Rabbit pAb.

Background

This gene encodes a member of the F-box protein family which is characterized by an approximately 40 amino acid motif, the F-box. The F-box proteins constitute one of the four subunits of ubiquitin protein ligase complex called SCFs (SKP1-cullin-F-box), which function in phosphorylation-dependent ubiquitination. The F-box proteins are divided into 3 classes: Fbws containing WD-40 domains, Fbls containing leucine-rich repeats, and Fbxs containing either different protein-protein interaction modules or no recognizable motifs. The protein encoded by this gene belongs to the Fbws class; in addition to an F-box, this protein contains multiple WD-40 repeats. The encoded protein mediates degradation of CD4 via its interaction with HIV-1 Vpu. It has also been shown to ubiquitinate phosphorylated NFKBIA (nuclear factor of kappa light polypeptide gene enhancer in B-cells inhibitor, alpha), targeting it for degradation and thus activating nuclear factor kappa-B. Alternatively spliced transcript variants have been described. A related pseudogene exists in chromosome 6.

Note: This product is for in vitro research use only