

SELPLG Antibody

Catalog No: #32371

Package Size: #32371-1 50ul #32371-2 100ul

Orders: order@signalwayantibody.comSupport: tech@signalwayantibody.com

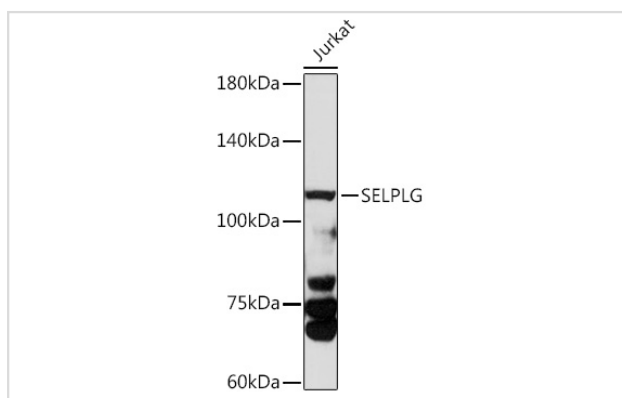
Description

Product Name	SELPLG Antibody
Host Species	Rabbit
Clonality	Polyclonal
Isotype	IgG
Purification	Affinity purification
Applications	WB
Species Reactivity	Human
Specificity	The antibody detects endogenous level of total SELPLG protein.
Immunogen Type	Recombinant Protein
Immunogen Description	Recombinant fusion protein of human SELPLG (NP_002997.1).
Target Name	SELPLG
Other Names	SELPLG;CD162;CLA;PSGL-1;PSGL1
Accession No.	Uniprot:Q14242GeneID:6404
Uniprot	Q14242
GeneID	6404
SDS-PAGE MW	120kDa
Concentration	1.0mg/ml
Formulation	PBS with 0.02% sodium azide,50% glycerol,pH7.3.
Storage	Store at -20°C. Avoid freeze / thaw cycles.

Application Details

WB □ 1:500 - 1:2000

Images



Western blot analysis of extracts of various cell lines, using SELPLG antibody.

Background

This gene encodes a glycoprotein that functions as a high affinity counter-receptor for the cell adhesion molecules P-, E- and L- selectin expressed on myeloid cells and stimulated T lymphocytes. As such, this protein plays a critical role in leukocyte trafficking during inflammation by tethering of leukocytes to activated platelets or endothelia expressing selectins. This protein requires two post-translational modifications, tyrosine sulfation and the addition of the sialyl Lewis x tetrasaccharide (sLex) to its O-linked glycans, for its high-affinity binding activity. Aberrant expression of this gene and polymorphisms in this gene are associated with defects in the innate and adaptive immune response. Alternate splicing results in multiple transcript variants.

Note: This product is for in vitro research use only