

CDC25C Antibody

Catalog No: #32378

Package Size: #32378-1 50ul #32378-2 100ul

Orders: order@signalwayantibody.com

Support: tech@signalwayantibody.com

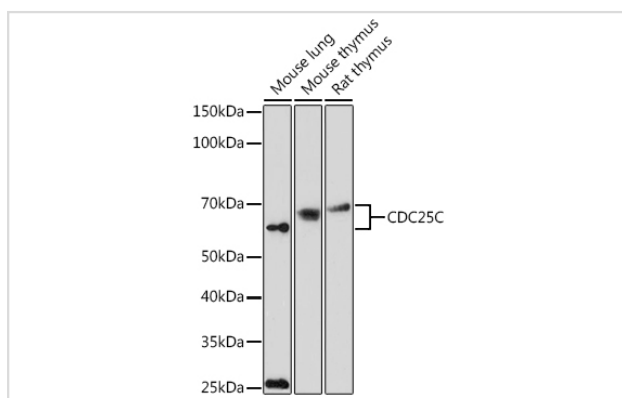
Description

Product Name	CDC25C Antibody
Host Species	Rabbit
Clonality	Polyclonal
Isotype	IgG
Purification	Affinity purification
Applications	WB
Species Reactivity	Human,Mouse,Rat
Specificity	The antibody detects endogenous level of total CDC25C protein.
Immunogen Type	Recombinant Protein
Immunogen Description	Recombinant fusion protein of human CDC25C (NP_001781.2).
Target Name	CDC25C
Other Names	CDC25C;CDC25;PPP1R60
Accession No.	Uniprot:P30307GeneID:995
Uniprot	P30307
GeneID	995
SDS-PAGE MW	60KDa
Concentration	1.0mg/ml
Formulation	PBS with 0.02% sodium azide,50% glycerol,pH7.3.
Storage	Store at -20°C. Avoid freeze / thaw cycles.

Application Details

WB □ 1:500 - 1:2000

Images



Western blot analysis of extracts of various cell lines, using CDC25C antibody.

Background

This gene encodes a conserved protein that plays a key role in the regulation of cell division. The encoded protein directs dephosphorylation of cyclin B-bound CDC2 and triggers entry into mitosis. It also suppresses p53-induced growth arrest. Multiple alternatively spliced transcript variants of this gene have been described.

Note: This product is for in vitro research use only