

CEACAM1 Antibody

Catalog No: #32394

Package Size: #32394-1 50ul #32394-2 100ul

Orders: order@signalwayantibody.comSupport: tech@signalwayantibody.com

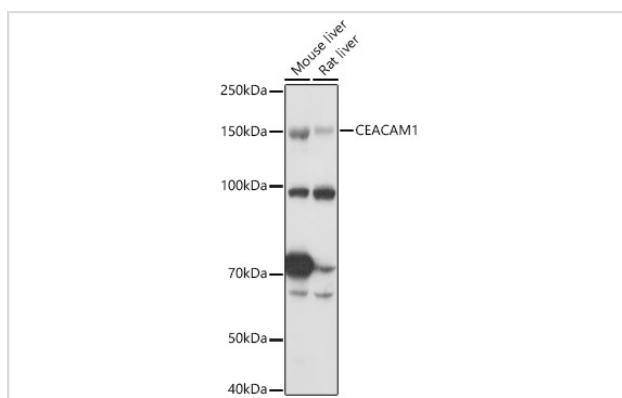
Description

| | |
|-----------------------|---|
| Product Name | CEACAM1 Antibody |
| Host Species | Rabbit |
| Clonality | Polyclonal |
| Isotype | IgG |
| Purification | Affinity purification |
| Applications | WB,IHC |
| Species Reactivity | Human,Mouse,Rat |
| Specificity | The antibody detects endogenous level of total CEACAM1 protein. |
| Immunogen Type | Recombinant Protein |
| Immunogen Description | Recombinant fusion protein of human CEACAM1 (NP_001192273.1). |
| Target Name | CEACAM1 |
| Other Names | CEACAM1;BGP;BGP1;BGPI |
| Accession No. | Uniprot:P13688GenelD:634 |
| Uniprot | P13688 |
| GenelD | 634 |
| SDS-PAGE MW | 130KDa/150KDa |
| Concentration | 1.0mg/ml |
| Formulation | PBS with 0.02% sodium azide,50% glycerol,pH7.3. |
| Storage | Store at -20°C. Avoid freeze / thaw cycles. |

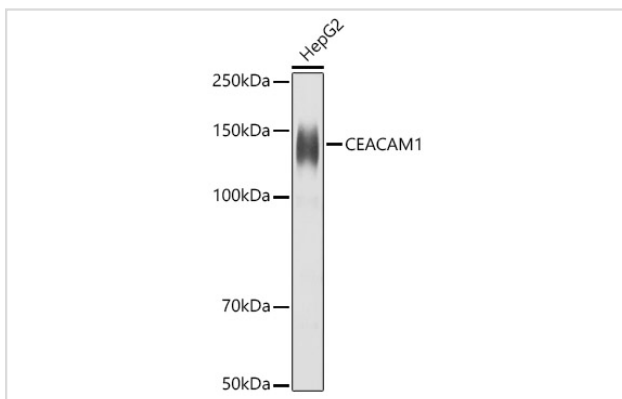
Application Details

WB 1:500 - 1:2000 IHC 1:50 - 1:200

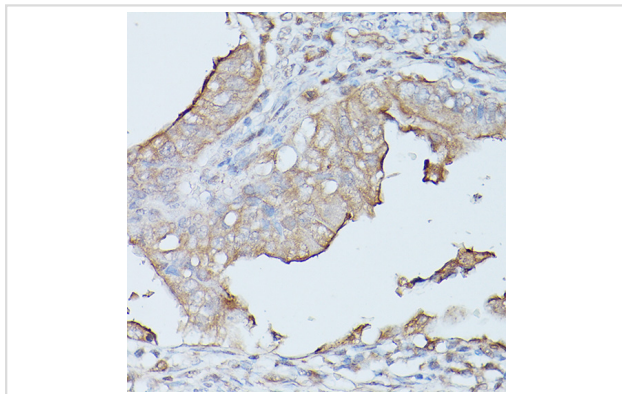
Images



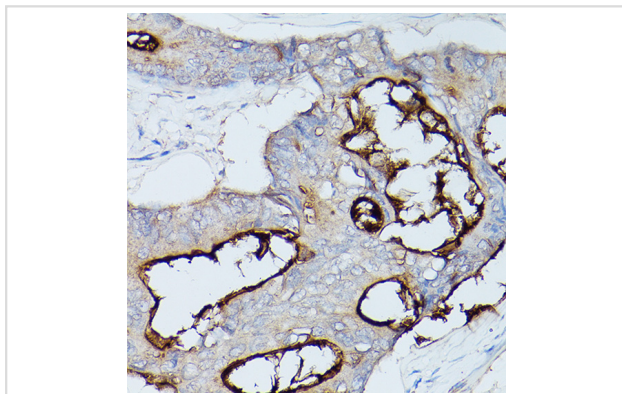
Western blot analysis of extracts of various cell lines, using CEACAM1 antibody.



Western blot analysis of extracts of HepG2 cells, using CEACAM1 antibody.



Immunohistochemistry of paraffin-embedded human oophoroma using CEACAM1 Rabbit pAb.



Immunohistochemistry of paraffin-embedded human colon carcinoma using CEACAM1 Rabbit pAb.

Background

This gene encodes a member of the carcinoembryonic antigen (CEA) gene family, which belongs to the immunoglobulin superfamily. Two subgroups of the CEA family, the CEA cell adhesion molecules and the pregnancy-specific glycoproteins, are located within a 1.2 Mb cluster on the long arm of chromosome 19. Eleven pseudogenes of the CEA cell adhesion molecule subgroup are also found in the cluster. The encoded protein was originally described in bile ducts of liver as biliary glycoprotein. Subsequently, it was found to be a cell-cell adhesion molecule detected on leukocytes, epithelia, and endothelia. The encoded protein mediates cell adhesion via homophilic as well as heterophilic binding to other proteins of the subgroup. Multiple cellular activities have been attributed to the encoded protein, including roles in the differentiation and arrangement of tissue three-dimensional structure, angiogenesis, apoptosis, tumor suppression, metastasis, and the modulation of innate and adaptive immune responses. Multiple transcript variants encoding different isoforms have been reported, but the full-length nature of all variants has not been defined.

Note: This product is for in vitro research use only