

CFB Antibody

Catalog No: #32396

Package Size: #32396-1 50ul #32396-2 100ul

Orders: order@signalwayantibody.comSupport: tech@signalwayantibody.com

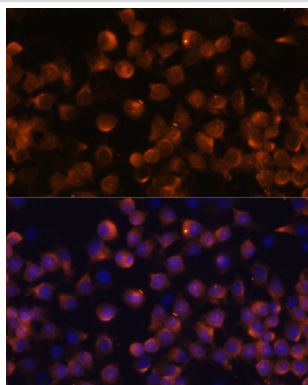
Description

Product Name	CFB Antibody
Host Species	Rabbit
Clonality	Polyclonal
Purification	Antibodies were purified by affinity purification using immunogen.
Applications	WB,IHC,IF
Species Reactivity	Human,Mouse,Rat
Specificity	The antibody detects endogenous level of total CFB protein.
Immunogen Type	Recombinant Protein
Immunogen Description	Recombinant protein of human CFB.
Target Name	CFB
Other Names	BF; FB; BFD; GBG; CFAB
Accession No.	Swiss-Prot:P00751NCBI Gene ID:629
Uniprot	P00751
GeneID	629;
SDS-PAGE MW	86KD
Concentration	1.0mg/ml
Formulation	Supplied at 1.0mg/mL in phosphate buffered saline (without Mg ²⁺ and Ca ²⁺), pH 7.4, 150mM NaCl, 0.02% sodium azide and 50% glycerol.
Storage	Store at -20°C

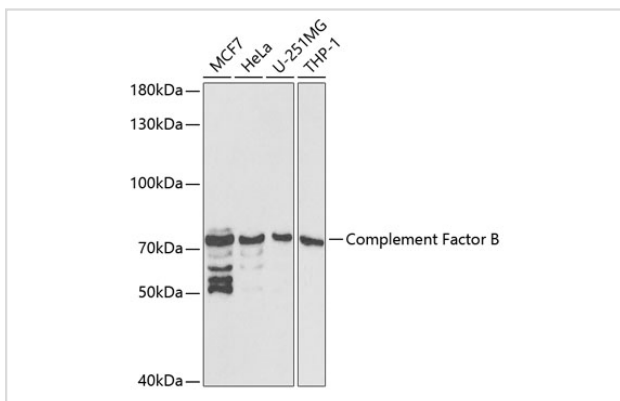
Application Details

WB □ 1:500 - 1:2000 IHC □ 1:50 - 1:200 IF □ 1:50 - 1:200 IP □ 1:20 - 1:50

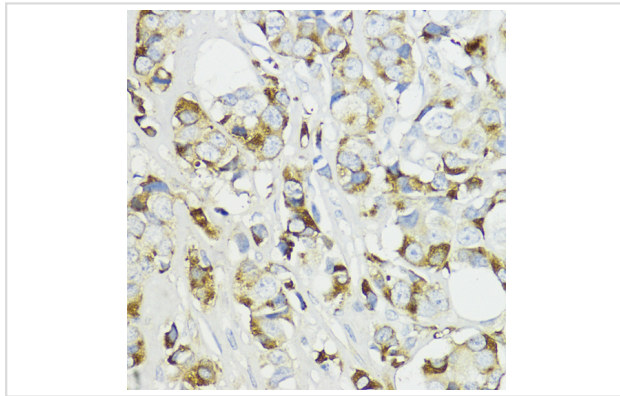
Images



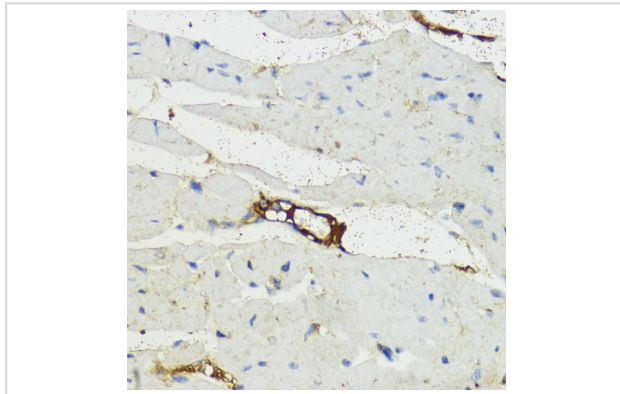
Immunofluorescence analysis of Raw264.7 cells using Complement Factor B Polyclonal at dilution of 1:100 (40x lens). Blue: DAPI for nuclear staining.



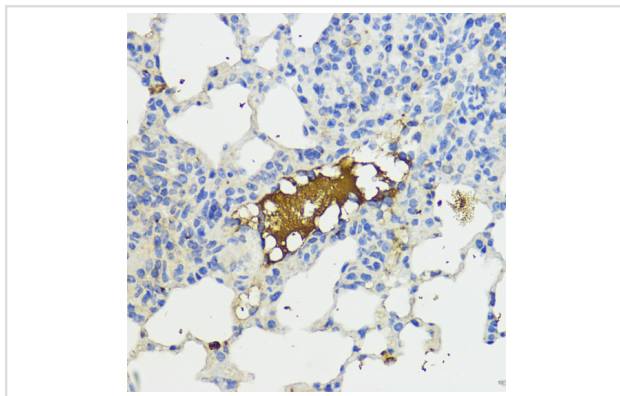
Western blot analysis of extracts of various cell lines, using Complement Factor B at 1:1000 dilution.



Immunohistochemistry of paraffin-embedded human mammary cancer using Complement Factor B at dilution of 1:200 (40x lens).



Immunohistochemistry of paraffin-embedded mouse heart using Complement Factor B at dilution of 1:200 (40x lens).



Immunohistochemistry of paraffin-embedded mouse lung using Complement Factor B at dilution of 1:200 (40x lens).

Background

This gene encodes complement factor B, a component of the alternative pathway of complement activation. Factor B circulates in the blood as a single chain polypeptide. Upon activation of the alternative pathway, it is cleaved by complement factor D yielding the noncatalytic chain Ba and the catalytic subunit Bb. The active subunit Bb is a serine protease which associates with C3b to form the alternative pathway C3 convertase. Bb is involved in the proliferation of preactivated B lymphocytes, while Ba inhibits their proliferation. This gene localizes to the major histocompatibility complex (MHC) class III region on chromosome 6. This cluster includes several genes involved in regulation of the immune reaction. Polymorphisms in this gene are associated with a reduced risk of age-related macular degeneration. The polyadenylation site of this gene is 421 bp from the 5' end of the gene for complement component 2.

Note: This product is for in vitro research use only