

SERPING1 Antibody

Catalog No: #32401

Package Size: #32401-1 50ul #32401-2 100ul

Orders: order@signalwayantibody.com

Support: tech@signalwayantibody.com

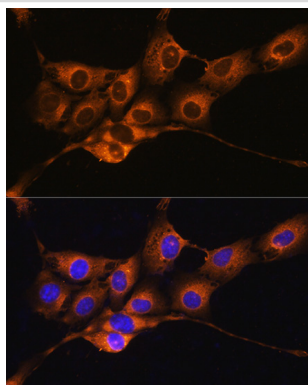
Description

Product Name	SERPING1 Antibody
Host Species	Rabbit
Clonality	Polyclonal
Purification	Antibodies were purified by affinity purification using immunogen.
Applications	WB,IF
Species Reactivity	Human,Mouse,Rat
Specificity	The antibody detects endogenous level of total SERPING1 protein.
Immunogen Type	Recombinant Protein
Immunogen Description	Recombinant protein of human SERPING1.
Target Name	SERPING1
Other Names	C1IN; C1NH; HAE1; HAE2; C1INH
Accession No.	Swiss-Prot:P05155NCBI Gene ID:710
Uniprot	P05155
GeneID	710;
SDS-PAGE MW	55KD
Concentration	1.0mg/ml
Formulation	Supplied at 1.0mg/mL in phosphate buffered saline (without Mg ²⁺ and Ca ²⁺), pH 7.4, 150mM NaCl, 0.02% sodium azide and 50% glycerol.
Storage	Store at -20°C

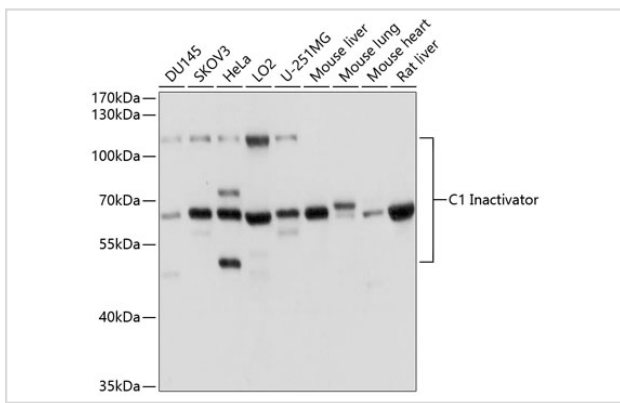
Application Details

WB □ 1:1000 - 1:2000IF □ 1:50 - 1:200

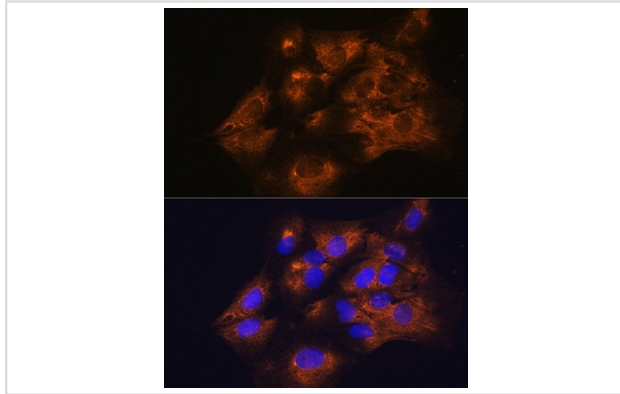
Images



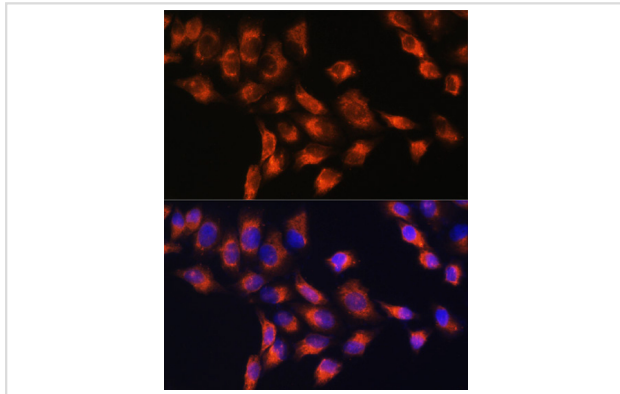
Immunofluorescence analysis of NIH/3T3 cells using C1 Inactivator at dilution of 1:100. Blue: DAPI for nuclear staining.



Western blot analysis of extracts of various cell lines, using C1 Inactivator at 1:1000 dilution.



Immunofluorescence analysis of C6 cells using C1 Inactivator at dilution of 1:100. Blue: DAPI for nuclear staining.



Immunofluorescence analysis of HeLa cells using C1 Inactivator at dilution of 1:100. Blue: DAPI for nuclear staining.

Background

This gene encodes a highly glycosylated plasma protein involved in the regulation of the complement cascade. Its protein inhibits activated C1r and C1s of the first complement component and thus regulates complement activation. Deficiency of this protein is associated with hereditary angioneurotic oedema (HANE). Alternative splicing results in multiple transcript variants encoding the same isoform.

Note: This product is for in vitro research use only