

DRD5 Antibody

Catalog No: #32402

Package Size: #32402-1 50ul #32402-2 100ul

Orders: order@signalwayantibody.com

Support: tech@signalwayantibody.com

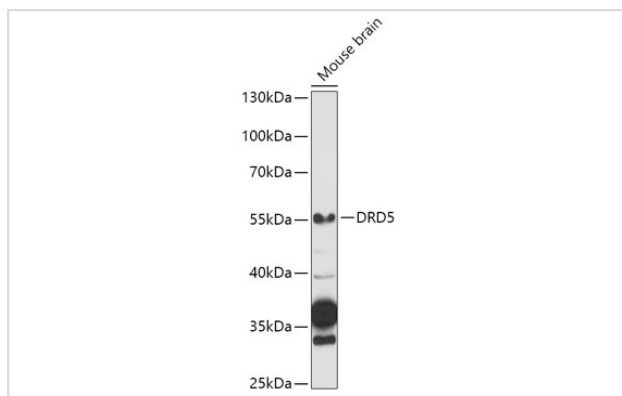
Description

Product Name	DRD5 Antibody
Host Species	Rabbit
Clonality	Polyclonal
Isotype	IgG
Purification	Affinity purification
Applications	WB
Species Reactivity	Human,Mouse
Specificity	The antibody detects endogenous level of total DRD5 protein.
Immunogen Type	Recombinant Protein
Immunogen Description	Recombinant fusion protein of human DRD5 (NP_000789.1).
Target Name	DRD5
Other Names	DRD5;DBDR;DRD1B;DRD1L2
Accession No.	Uniprot:P21918GeneID:1816
Uniprot	P21918
GeneID	1816
SDS-PAGE MW	55kDa
Concentration	1.0mg/ml
Formulation	PBS with 0.02% sodium azide,50% glycerol,pH7.3.
Storage	Store at -20°C. Avoid freeze / thaw cycles.

Application Details

WB □ 1:500 - 1:2000

Images



Western blot analysis of extracts of Mouse brain, using DRD5 antibody.

Background

This gene encodes the D5 subtype of the dopamine receptor. The D5 subtype is a G-protein coupled receptor which stimulates adenylyl cyclase. This receptor is expressed in neurons in the limbic regions of the brain. It has a 10-fold higher affinity for dopamine than the D1 subtype. Pseudogenes related to this gene reside on chromosomes 1 and 2.

Note: This product is for in vitro research use only